

622GW

User Manual



Introduction to your Dash Cam

This range of Nextbase™ Dash Cams has been designed specifically with ease of use in mind; it is recommended NOT to change the default settings, which have been carefully selected to give the best performance for day to day use.

Please check the firmware version of the Dash Cam, the version can be found in the Setup menu under System Info.

The latest versions are available to download from our website, where you can download and update when necessary.

www.nextbase.com

First Time Use

Before you can use your Dash Cam, it is *essential* to make sure it is fully charged. Connect your Dash Cam via the USB port to a home power source such as a PC or home USB socket for approximately 2 hours.

Basic Operation

A U3 type Micro SD card is required to use this Dash Cam. This is due to the very large data rate generated by high resolution recording. For best results, we recommend using our Nextbase branded SD cards with your Dash Cam. For use with Rear Cam attached, a U3 Card is required.

Your Nextbase Dash Cam is set to record video, in files of just 1 minute in length. This means that each video file is a manageable size should you need to download and send to your insurance company. Eventually your MicroSD card will fill up with video files but don't worry, the camera automatically deletes the oldest file to make space for new recordings. This way you never run out of space and have plenty of driving data saved.

Typically a 16Gb card will store the last 45 minutes of driving footage.

The GPS will automatically adjust for Daylight Savings Time.

Automatic Start / Stop Technology

The Dash Cam will automatically power on and be ready to use once power is available.

In some vehicles this will be when connections are made, for others the Dash Cam will power on once the ignition has been turned on. When power is cut off, the Dash Cam will perform an automatic shutdown process.

1. Tips for capturing best video footage:

- 1.1 Position the Dash Cam in the centre of the windscreen and ideally behind the rear view mirror so it is not a distraction to the driver.
- 1.2 Ensure that the area on the windscreen that the Dash Cam is looking through is clear of dirt and is within the wiper zone. This will ensure that your videos are as clear as possible.
- 1.3 Reduce the amount of sky in the picture, by angling the view of the camera towards the road. Too much sky will make the road appear darker due to the automatic exposure compensation.
- 1.4 Remove unnecessary items from your dashboard. If objects are placed on your dashboard these can cause reflections to be seen on the windscreen and these reflections may be captured during recording.

2. Tips for stable memory card performance:

- 2.1 Periodically format the memory card. Every 2-3 weeks we recommend that you format the memory card. This will wipe any files from the card and set it up afresh for continued use with your Dash Cam. Of course, you should only do this AFTER you've downloaded any files from the card that you may want to keep, as formatting the card will remove all content.
- 2.2 Format your memory card using the Dash Cam. This will make sure that the card is structured specifically for your camera. Within the Setup menu, select 'Format SD Card' and follow the on-screen instructions.
- 2.3 Switch off the Dash Cam before removing the SD card, to prevent the chance of damage being caused to the memory card or the files stored upon it.

Nextbase SD Cards

For best results, we strongly recommend using our Nextbase branded SD cards with your Dash Cam, available to purchase online from nextbase.com, or your nearest retailer. A card that is not made specifically for a Dash Cam may appear to work perfectly in the beginning, although failure tends to happen after prolonged use, this could be days, weeks, or months. In a worst-case scenario, you may only discover recording failure after your SD card fails to record a serious incident, therefore using a suitable SD card is imperative.


See page 41 for more information on Nextbase SD cards.

Table of Contents

| | | | |
|--|----------------|--|----------------|
| Introduction to your Dash Cam | 02 | Playback Mode – Video Editing | 30 |
| Table of Contents | 03 | Playback Mode – Protect & Delete | 31 |
| Precautions / Cautions on using this product | 04 | MyNextbase Connect™ | 32 |
| Product Warnings | 05 | MyNextbase Player™ | 33 - 34 |
| Usage Warnings / Notices | 06 | MyNextbase Cloud™ | 35 |
| Product Specifications | 07 | Alexa Built-In™ | 36 |
| Package Contents | 08 | What3Words™ | 37 |
| Product Features | 09 | PC Connection | 38 |
| Camera Parts & Controls | 10 - 11 | Firmware Update Information | 39 |
| In Vehicle Installation | 12 - 15 | TV Connection | 40 |
| Positioning Your Dash Cam | 16 | Nextbase™ SD Cards | 41 |
| Polarising Filter | 17 | Frequently Asked Questions | 42 - 43 |
| First Time Use | 18 - 19 | CE Mark Information / Software License Agreement | 44 |
| Menus | 20 - 23 | Warranty | 45 |
| Emergency SOS | 24 - 26 | Compliance & Conformity Statements | 46 - 47 |
| Connect Apps | 27 | More Nextbase™ Products | 48 |
| Video Mode / Playback Mode - Photo | 38 | Dash Cam Functions | 49 |
| Playback Mode - Video | 29 | | |

Precautions

Please read this manual carefully before operation and keep it for future reference. It will be helpful should you encounter any operational problems.

- WARNING:** Do not expose this product to rain, moisture or water under any circumstances, doing so may result in the risk of electric shock or fire.
- CAUTION:** To reduce the risk of electric shock, do not perform any servicing other than that contained in the instruction manual unless you are qualified to do so. Have the unit serviced by a qualified service technician if;
The unit has been exposed to rain or water.
The unit does not seem to operate normally.
The unit exhibits a marked change in performance.
- LCD:** A Liquid Crystal Display (LCD) screen is a multilayer complex component, containing 1,229,760 pixels. Pixels can however fail during normal product life. 1 pixel = 0.0000008% failure rate, and one pixel failure per year of operation is considered normal and not a cause for concern.
- WEEE:**  Disposal of Waste Electrical and Electronic Equipment and/or Batteries by users in private households in the European Union. This symbol on the product or on the packaging indicates that this cannot be disposed of as household waste. You must dispose of your waste equipment and/or battery by handing it over to the applicable take-back scheme for the recycling of electronic equipment and/or batteries. For more information please contact your local household waste disposal office.
- CHOKING HAZARD:** Some Products may contain components that are small enough to be swallowed. Please keep out of reach of children.

Cautions on Using this Product

1. Ensure that the windscreen is free of dirt or grease before placing mount upon it.
2. Do not obscure the view of the road ahead or impede the deployment of any airbags in the event of an accident.
3. When not in use, please disconnect the car adaptor from both the 12/24Vdc outlet in your vehicle and the Dash Cam itself.
4. Only clean the Dash Cam with a soft dry cloth, for tough dirt, apply some neutral detergent diluted in 5 to 6 parts water to a soft cloth.
Please note that alcohol, thinner, benzene etc could cause damage to the paint or coatings.
5. Avoid making contact with the lenses as damage may be caused.
6. If required clean the glass lens carefully using spectacle lens cleaning fluid on a soft cloth only.
7. Before you can use your Dash Cam, it is essential that it is fully charged. Connect your Dash Cam via the USB port to a home power source such as a PC or home USB socket for approximately 2 hours.
8. You agree to use your Nextbase Dash Camera in compliance with all applicable laws, including local laws of the country or region in which you reside or in which you use your Nextbase Dash Camera. When you use your Nextbase Dash Camera, you do so at your own initiative and you are responsible for compliance with any applicable laws, including but not limited to applicable privacy and data collection laws, and laws prohibiting or restricting the placement of objects on the windshield of a motor vehicle.
IT IS THE USER'S RESPONSIBILITY TO MOUNT THE DEVICE IN COMPLIANCE WITH ALL APPLICABLE LAWS AND ORDINANCES. Portable Multimedia Limited trading as Nextbase is not responsible if you access or use your Nextbase Dash Camera in any manner that violates applicable law
9. The video recordings made by this Dash Cam are intended for personal use only.
10. Publication of the recordings on Youtube, the internet or other methods are subject to the Data Protection Act and the requirements thereof must be adhered to. If the Dash Cam is to be used within a commercial environment, i.e. truck use, then the CCTV regulation apply also, in addition to the Protection Act regulations. This includes labelling to identify the use of CCTV is taking place, the omission of Audio recording and informing the relevant authorities of who controls the data.
11. Video playback upon the Dash Cam which is visible to the driver is prohibited or restricted in some countries or States. Please adhere to these laws.
12. Whilst driving, do not adjust the controls of your Dash Cam as this is a distraction to driving.

Distractions can lead to accidents, and the risk of injury or death. Always keep your eyes on the road, and keep aware of your surroundings.



Product Warnings

Failure to heed the following warnings could result in an accident or collision resulting in death or serious injury.

Distraction Warning

This device is intended to enhance the situational awareness when used properly. If used improperly, you could become distracted by the display, which could lead to an accident causing serious personal injury or death. DO NOT seek to access the information stored on the device or change the device settings whilst driving. Information stored on the device should be reviewed only when your vehicle is stationary, and you are parked in a safe place in compliance with local laws.

The device settings should only be changed when your vehicle is stationary, and you are parked in a safe place in compliance with local laws. Always maintain awareness of your surroundings and do not stare at the display or become distracted by the display. Focusing on the display could cause you to miss obstacles or hazards. Use the device at your own risk.

Video playback upon devices with display which are visible to the driver, is prohibited or restricted in some Countries or States. Please adhere to these laws.

Vehicle Installation Warnings

When installing the device in a vehicle, do not place the device where it obstructs the driver's view of the road or interferes with vehicle operating controls, such as the steering wheel, foot pedals, or transmission levers. Do not place unsecured on the vehicle dashboard.

Do not place the device in front of or above any airbag.

Nextbase is not responsible for any costs or expenses associated with void warranties or vehicle repairs.

Battery Warnings

Lithium-ion batteries are used in most Nextbase™ devices. If these guidelines are not followed, batteries may experience a shortened life span or may present a risk of damage to the device, fire, chemical burn, electrolyte leak, and/or injury.

- Do not disassemble, modify, remanufacture, puncture, or damage the device or batteries.
- Do not remove or attempt to remove the non-user replaceable battery.
- Do not expose the device to fire, explosion, or other hazard.
- Do not expose the device to rain or water.

Magnet Warnings

Both the Dash Cam and its mount may contain magnets. Under certain circumstances, magnets may cause interference with some internal medical devices, including pacemakers and insulin pumps. Devices and mounts that contain magnets should be kept away from such medical devices. Magnets may cause damage to some electronic devices, including hard drives in laptop computers and bank / credit or membership cards. Use caution when devices and mounts that contain magnets are near electronic devices or bank / credit or membership cards.



Usage Precautions

Failure to heed the following precautions could result in personal injury or property damage, or negatively impact the device functionality.

Battery Precaution

- Do not immerse or expose the Dash Cam or batteries to rain, water or other liquids.
- Do not leave the device exposed to a heat source or in a high-temperature location, such as in the sun or in an unattended vehicle. To prevent the possibility of damage, remove the Dash Cam from the vehicle or store it out of direct sunlight, such as in the glove box.
- Do not operate the Dash Cam outside of the following temperature range:
from -20° to 45°C (from -4° to 113°F).
- When storing the Dash Cam for an extended time period, store within the following temperature range: from 0° to 25°C (from 32° to 77°F).
- Do not use a power and/or data cable that is not approved or supplied by Nextbase™.
- Contact your local waste disposal department to dispose of the Dash Cam/batteries in accordance with applicable local laws and regulations.

Windshield Mounting Legal Restriction Precaution

Before using the Dash Cam on your windshield, check the state and local laws and ordinances where you drive. Some laws prohibit or restrict the placement of objects on the windshield of a motor vehicle. IT IS THE USER'S RESPONSIBILITY TO MOUNT THE DEVICE IN COMPLIANCE WITH ALL APPLICABLE LAWS AND ORDINANCES.

Always mount your Nextbase Dash Cam in a location that does not obstruct the driver's view of the road. Nextbase does not assume any responsibility for any fines, penalties, or damages that may be incurred as a result of any state or local law or ordinance relating to the use of your Nextbase Dash Cam.

Camera Legal Requirements Precaution

In some jurisdictions it could be considered an invasion of privacy rights to take or publicly display photographs or videos of people or their vehicles using this product. It is your responsibility to know and comply with applicable laws and rights to privacy in your jurisdiction and in any jurisdiction in which you may use this device. Video recordings made by this Dash Cam should be for personal use only.

Publication of the recordings on YouTube, the internet or other methods is subject to the data protection legislation and the requirements thereof must be adhered to. Such data protection legislation may prohibit the use and dissemination by you of Dash Cam footage or may impose restrictions on it – we recommend that you check the legal requirements with your legal advisor before disseminating any Dash Cam footage.

If the Dash Cam is to be used within a UK commercial environment, i.e. truck use, then the CCTV regulations apply in addition to the Data Protection Act regulations. This includes labelling to identify the use of CCTV is taking place, the omission of Audio recording and informing the relevant authorities of who controls the data. For use in a commercial environment in non-UK countries, please refer and adhere to local regulations and requirements. For non-UK operation, specific legal requirements may apply where Dash Cams are to be used in a commercial or employment context - again, we recommend that you check the legal requirements with your legal advisors prior to commencing use of Dash Cams in commercial or employment contexts.

Notices

G Sensor Notice

The G Sensor within the Dash Cam measures forces exerted upon it, with reference to one g which is the nominal force exerted upon us when stationary on the earth's surface. The G Sensor will also trigger to protect any recording currently in progress, if a pre-determined threshold of force is exceeded. The G Sensor protection will be adversely affected if the Dash Cam is NOT mounted in the vertical direction i.e. with the lens pointing to or from the direction of travel. G Force information derived from a G Sensor is not warranted to be totally accurate at all times, as it is derived from the G Sensor through a sampling method over time. The precision of the G Sensor value recorded depends upon when the acceleration took place at the instance of the sample taken. The thresholds to trigger the video protection rely upon a trigger value being exceeded between two successive samples, in any one of the three G Sensor axis. If the Automatic G Sensor protection does NOT trigger during an event, then the Protect button should be pressed, in order to protect the file. Protecting the file can also be performed using the Playback function upon the Dash Cam (models with LCD screens), or indeed through the MyNextbase Connect™ App for applicable Wi-Fi models.

Parking Mode Notice

We only recommend enabling Parking Mode when the Dash Cam is installed using a permanently live power supply (live when the ignition is off) provided by a Nextbase Hardwire Kit, the use of this feature without continuous power being fed to the Dash Cam will not be sufficient for a consistent and reliable Parking Mode experience.

Protected Files

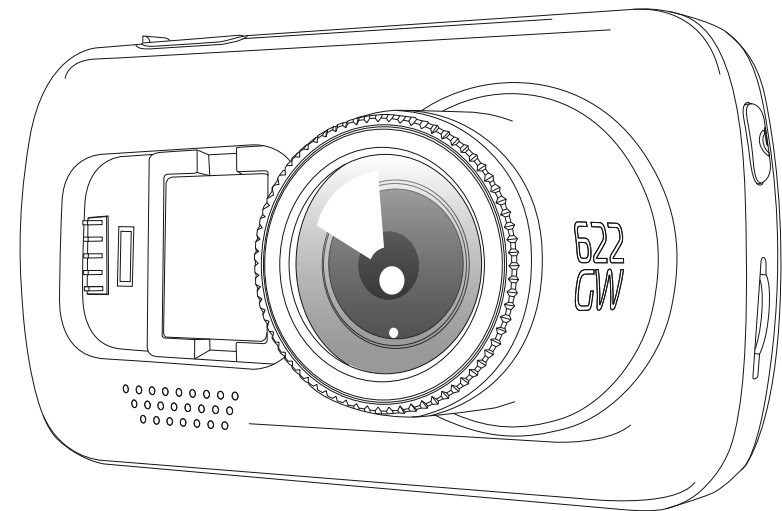
Protected Files may be overwritten, or deleted; make sure to back up important files to a separate, secure place *as soon as possible* to avoid accidental deletion from the Dash Cam's SD Card. We recommend storing important files on a separate SD or hard drive. If a video file has been protected, this does not mean that the file will remain protected forever. Many of our latest Dash Cam models will overwrite the oldest protected files, if the protected files on the SD card begin taking up too much storage space. The table shown below lists the file limit for each Dash Cam model.

| Dash Cam Model | Protected File Limit |
|----------------|----------------------|
| 122 | N / A |
| 122HD | 40% |
| 222 | 30% |
| 222G | 30% |
| 222X | 30% |
| 322GW | 33% |
| 422GW | 33% |
| 522GW | 33% |
| 622GW | 33% |

In conclusion, if an incident occurs and a photo or video is important to you, BACK IT UP to a separate storage place as soon as possible. Format (delete all files) your SD regularly, after backing up important files, in order to keep it in good working condition.

Product Specification

| | |
|--|--|
| Model Number / Name | NBDVR622GW |
| Power Requirements | 5V / 1.5A |
| Power Supply | 12-24Vdc Car Power Cable (supplied) Fuse Type: 32mm / 2A Output: 5Vdc Hardwire Kit also available to purchase for a hidden, permanent power supply. |
| Sensor Resolution | 8MP (3840 x 2160) |
| Lens - Type / Angle / Aperture | 6G / 140° / F1.3 |
| Recording Resolution | 3840×2160 @ 30 FPS day & night |
| Screen Size | 3" |
| Screen Resolution | 960 (W) X 480 (H) pixels |
| Screen Ratio | 16:9 |
| Card Reader | MicroSD, U3, up to 256GB; 64-128GB recommended |
| SD Card (Recommended Type) | 64-128GB SDHC / SDXC, U3, Class 10 (48Mb/s) For best results, use a Nextbase branded SD card. |
| SD Card Recorded File Capacity (based on default settings. Recording times are reduced with Rear Cam attached) | 8GB MicroSD = 20 minutes of recording 16GB MicroSD = 45 minutes of recording 32GB MicroSD = 90 minutes of recording 64GB MicroSD = 180 minutes of recording 128GB MicroSD = 360 minutes of recording |
| Recording Format | MP4 |
| Internal Battery | Lithium-Polymer 3.7V / 320mAh (approx. 15 mins recording time) Battery design allows the 'Auto Power Off' feature to function in event of power loss within the vehicle. It is not intended as an alternative power source to replace the supplied car power cable. |
| GPS | Dual System |
| Unit Dimensions (mm) | 94 x 53 x 45 |
| Unit Weight | 125g |

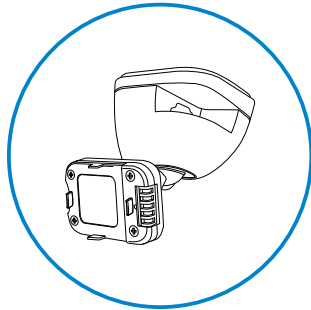


Amazon, Alexa and all related logos are trademarks of Amazon.com Inc or its affiliates.
The Bluetooth™ word mark and logos are registered trademarks owned by Bluetooth SIG.
Windows is a registered trademark of Microsoft Corporation in the United States and other countries.
Android is a trademark of Google Inc in the United States and in other countries.
2015 Google Inc. All rights reserved. Google Maps™ mapping service is a trademark of Google Inc.
Mac is a registered trademark of Apple Inc in the United States and in other countries.
iOS is a trademark or registered trademark of Cisco in the United States and in other countries.
Wi-Fi is a registered mark of Wi-Fi Alliance Corporation.
microSD and the microSD logo are trademarks of SD-3C, LLC.
MyNextbase Player™, MyNextbase Cloud™, and Click&Go PRO™ are registered trademarks of Portable Multimedia Ltd.

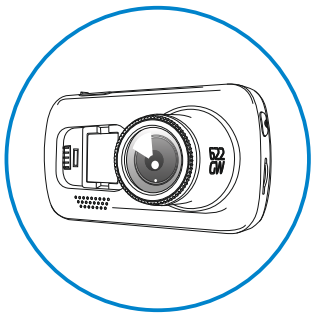
Package Contents

Please check the contents of your Nextbase™ Dash Cam product.

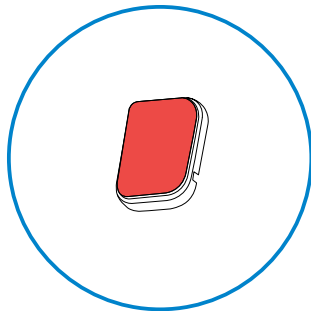
Click & Go Powered Mount



Nextbase 622GW Dash Cam

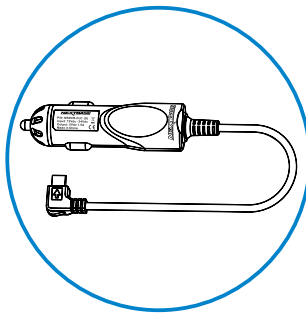


Your Dash Cam to record the road ahead.



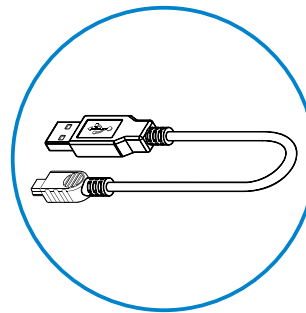
Adhesive 3M Attachment

Car Power Cable (4m)



Charge your Dash Cam in car using the Car Power Cable.

USB Connection Cable



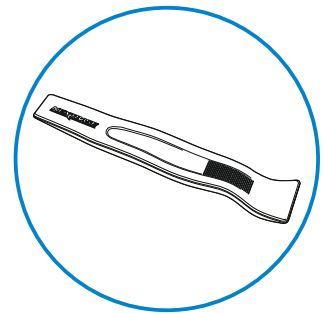
Connect your Dash Cam to a PC.

622GW Quick Start Guide



Quickly get your Dash Cam up and running using Quick Start Guide.

Cable Tidy Tool



Use the Cable Tidy Tool to stow the power cable within the lining of your car.

Product Features

Thank you for purchasing this Nextbase Dash Cam product, in this section we will outline some of the features available with this Dash Cam.



HD Recording Capability with Enhanced Image Stabilisation

Ultra Clear 4K recording at 30 FPS, to record the road ahead. Inbuilt polarising filter reduces windscreen reflection and glare. Enhanced Image Stabilisation greatly reduces vibrations from your vehicle and provide a super smooth, crystal clear image, allowing you to see more details in your recordings.



Super Slow Motion

When recording in 1080P at 120 FPS you will be able to view your video in Super Slow Motion. This feature is ideal to help identify what happens in an incident and capture details such as number plates.



Enhanced Night Vision & Extreme Weather Mode

Your 622GW Dash Cam automatically detects light levels and enhances the image as its being recorded, allowing for clearer night-time recordings while Extreme Weather Mode allows you to “see through fog” and could prove vital in identifying critical details in low visibility conditions.



HD Touch Panel Display

Bright, clear, high definition 3" screen with IPS technology for a wide viewing angle.



Click & Go Pro Powered Mount

Our exclusive Click and Go Pro powered magnetic car mount to easily install and remove your Dash Cam with just one hand.



G Sensor / File Protection

In the event of an impact the device will automatically 'protect' the recording, stopping the file from being over-written. This can also be performed manually, by pressing the 'protect' button. Individual files can also be 'protected' when viewed within playback mode.



Inbuilt GPS and 'what3words'

Inbuilt GPS to keep track of your journeys. By partnering with what3words we can provide you with your exact location to a 3m square location. In the event of an incident, this location can be shared with the emergency services to quickly and precisely locate you.



Automatic Start / Stop Technology

As soon as the vehicle ignition is turned on, your Dash Cam will start to record automatically. When the ignition is turned off, the Dash Cam will perform an automatic shutdown process.



Intelligent Parking Mode

Intelligent Parking Mode triggers recording automatically when the G-Sensor is triggered, keeping your car safe when parked.



Built-in Microphone & Speaker

Record audio to compliment the video recordings.



MyNextbase™ Suite

MyNextbase Connect App - View, manage and upload videos, set up Alexa and Emergency SOS features.

MyNextbase Cloud - Upload your video to the Nextbase server to get a shareable link to send to friends, insurers, and social media.

MyNextbase Player - Playback software for viewing, managing, editing, and sharing your videos.



Alexa Built-In

Operate your Dash Cam through Alexa voice control (must have Alexa app installed; see page 36 for installation and usage details).

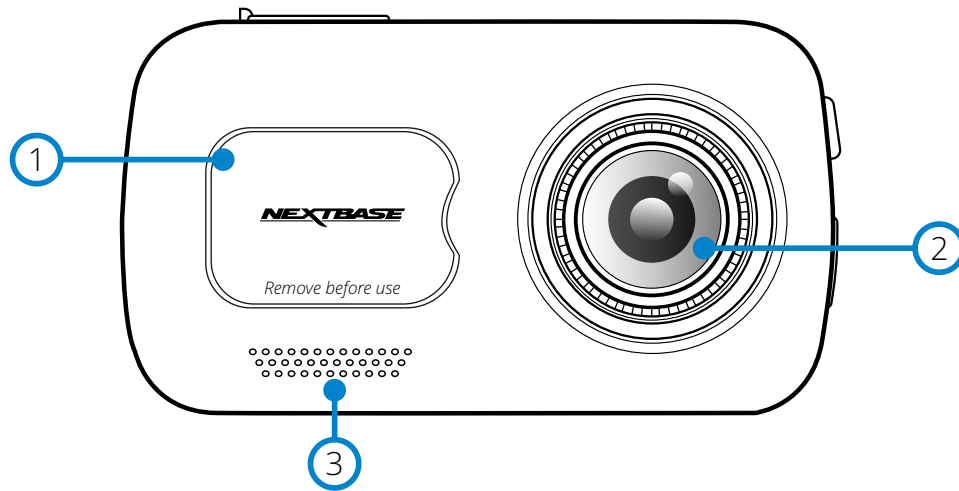


Dash Cam Accessories

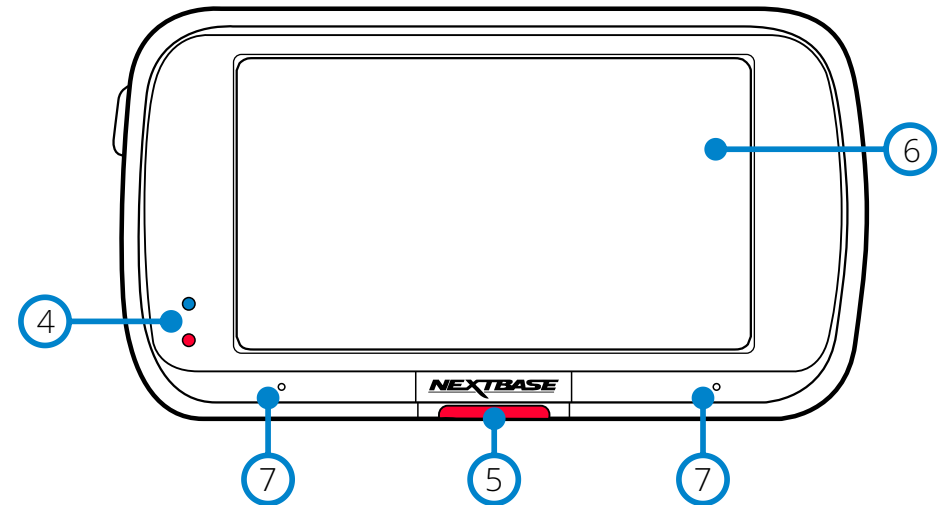
Your Dash Cam can be fitted with a range of Nextbase accessories to enhance your recordings, including Rear Facing Cameras to record the road behind you, or the interior of your vehicle. See the Nextbase Accessories Manual on www.nextbase.com for more information.

Camera Parts and Controls

See below to identify the parts and controls of your Dash Cam



- 1 Dust Cover**
Mounting point located under the dust cover.
Regulatory markings (FCC, RCM, WEEE) can also be found underneath the dust cover.
- 2 Camera Lens**
Wide angle 140° view.
- 3 Speaker**
Integrated speaker for audio playback.

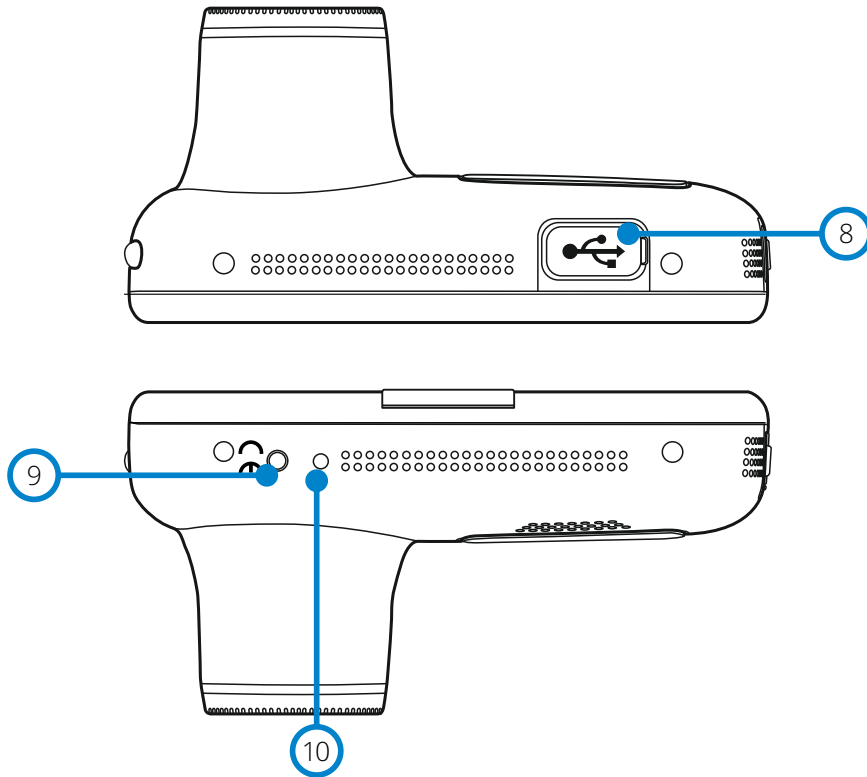


- 4 LEDs**
Top: Blue
- The Blue LED will be on while the Dash Cam is charging. It will turn off when charging is complete, even if the Dash Cam is still plugged in.
Bottom: Red
- The Red LED is permanently on while the Dash Cam is active. It will flash while recording.
- 5 Protect Button**
Press whilst recording to protect the current file in event of an emergency situation.
When in the menus, or in playback mode, pressing this will also act as a Back button.

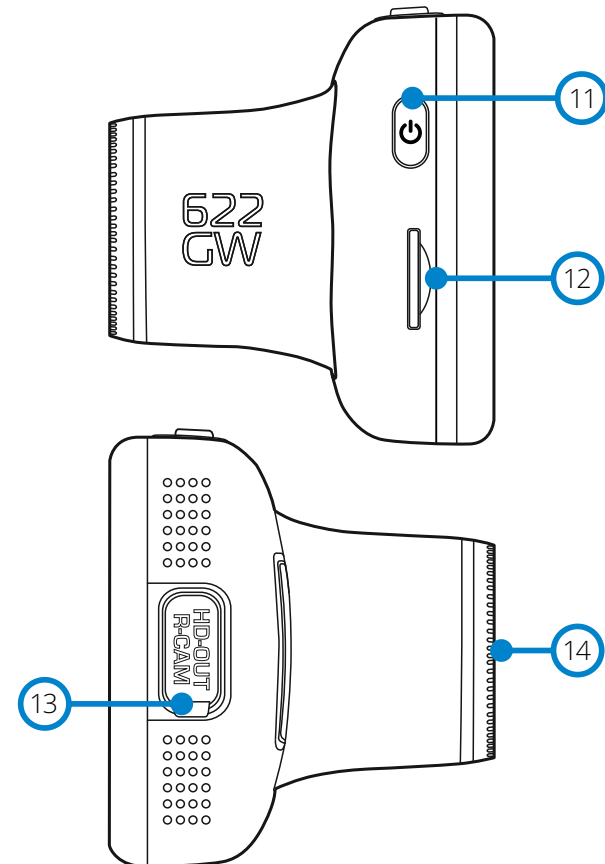
Note:
- When the 'Protect' function is activated a file containing 15 seconds prior to the incident and 30 seconds after is written to the Protected folder.
- 6 Screen**
3" Inch High Resolution Screen.
Tap the centre of the screen to take a photo. This applies while recording and while in video mode.
If a Rear Cam is attached, touch the centre of the Front Facing view to take a photo. This will save 2 photos, one from the Front Facing camera, and one from the Rear Facing camera.
- 7 Microphone**
Integrated microphone for audio recording.

Camera Parts and Controls (cont.)

See below to identify the parts and controls of your Dash Cam



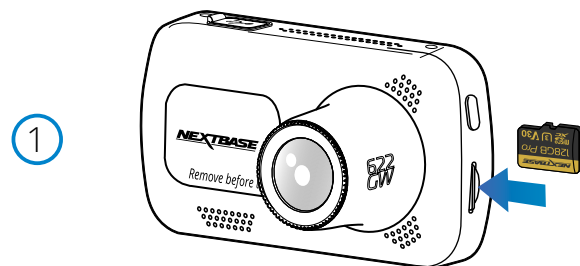
- 8 USB Cover**
USB port located under the dust cover.
- 9 Light Sensor**
When Screen Dimming is turned ON in the Setup Menu, the screen brightness is automatically adjusted relative to the ambient light levels.
- 10 Reset Button**
Press to force a hard restart of the Dash Cam.



- 11 Power Button**
Press and hold for 2 seconds to turn the Dash Cam On/Off. Short press, acts as a back button when in the Menu.
- 12 MicroSD Card Slot**
Insert the MicroSD card here, taking care that the gold contacts are facing towards the rear of the Dash Cam.
- 13 HD-Out/Rear Cam Input**
Connection point for the Rear Cameras and TV Connection, see page 40.
- 14 Polarising Filter**
Reduces the glare on the windscreen to help record clearer videos. See page 17 for setup information.

In Vehicle Installation

Please follow the instructions below for the first-time installation of the Dash Cam. Once successfully installed simply remove the camera from the mount as required.

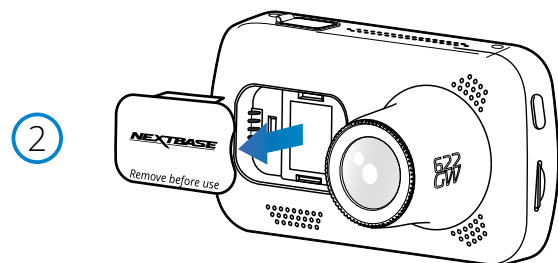


1 Insert MicroSD Card

Insert a suitable MicroSD card (U3 Type) in to the Dash Cam, taking care that the gold contacts are facing towards the LCD screen side of the Dash Cam. Push the memory card until it clicks into place.

Note:

- Use the edge of a small coin (or similar object) to push the memory card in place if required. Take care that card has 'clicked' into place, a second push inwards will release the memory card.
- For best results, we recommend using Nextbase branded SD cards.
- Do not remove or insert the memory card when the Dash Cam is turned on. This may damage the memory card, or any stored recordings.



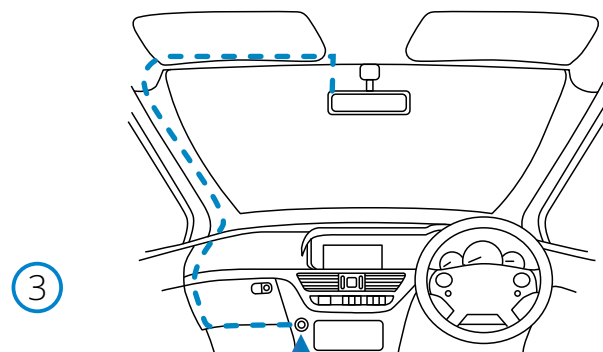
2 Remove dust cover from the Dash Cam

Remove the dust cover that is located on the front of the Dash Cam to gain access to the mounting point.

To remove the dust cover, lift the cover away from the body of the Dash Cam.

Note:

- If the Dash Cam is not to be used for a period of time replace the dust cover to help keep the components free of dust or other contaminants.



12-24Vdc

The above diagram is for illustration purposes only.



Cable Tidy Tool (included with your Dash Cam)

3 Plug the power cable into the 12-24Vdc outlet of your vehicle

The Dash Cam will automatically power on and start recording once power is available. In some vehicles this will be when connections are made, for others the Dash Cam will power on once the ignition has been turned on.

Route the power cable around the windshield to the 12-24Vdc socket, ensuring that your view is not obstructed, and that the cable is not a distraction. Use the cable fitting tool (bottom, left) included with your Dash Cam to more easily open the lining of your vehicle, within which you can stow the cable.

See page 'Positioning your Dashcam' for more details.

Note:

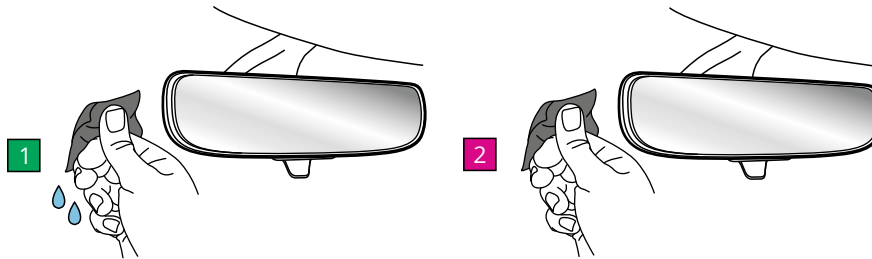
- Do NOT wire the Dash Cam directly to a 12Vdc supply by cutting the cigarette plug off the end of the cable, or permanent damage will result.
- Also available to purchase is a Nextbase™ Hardwire Kit. This connects your Dash Cam directly to the vehicle's fusebox to power it leaving your 12Vdc outlet available for Phone / Sat Nav charging. The Nextbase Hardwire Kit includes the necessary 12-24Vdc to 5Vdc convertor and battery protection circuitry. See page 9-10 of the Nextbase Accessories Manual for further information.

4



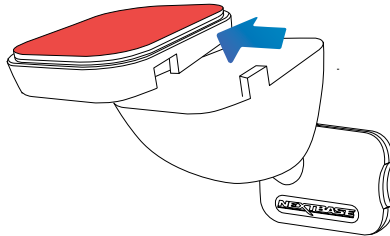
4. Scan the QR Code for adhesive mount installation guide.
Watch the video to see how to best install the adhesive mount. This covers steps 5 - 10.

5



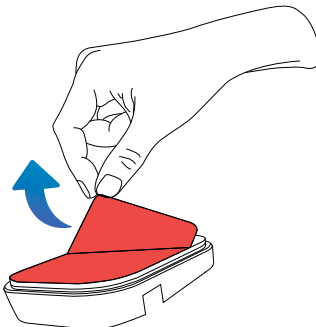
5. Clean the area of the windscreen you will mount the Dash Cam.
Ensuring that the windscreen is clear of grease and dirt allows the most effective adhesion, keeping your Dash Cam securely mounted. ideally, choose an area within the wiper zone to allow clear recordings in all weather conditions.
- 1) Use the wet wipe (green pack) to clean the windscreen in the target area.
 - 2) Use the dry wipe (pink pack) to dry the windscreen in the target area.

6



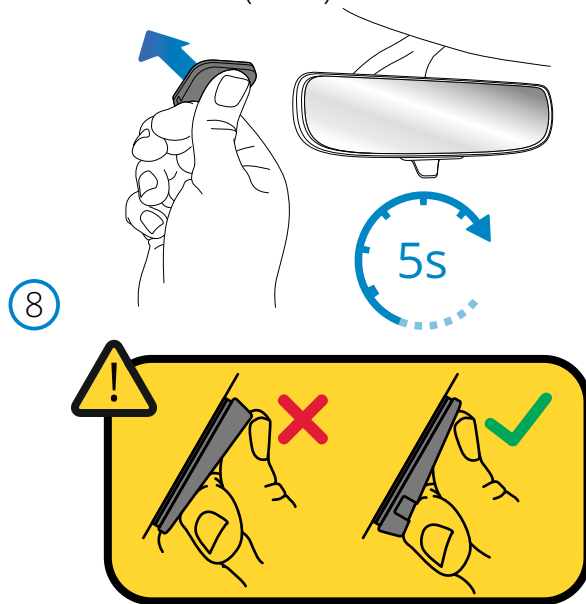
6. Remove the adhesive pad from the Dash Cam mount.
Firmly slide the adhesive pad to the left to detach it from the mount. You will hear a click as the pad detaches.

7



7. Remove the adhesive cover on the pad
Gently lift the cover layer to expose the adhesive pad beneath.

In Vehicle Installation (cont.)

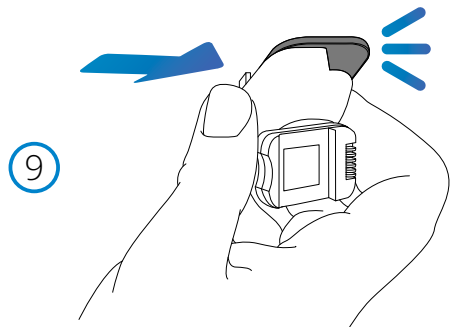


8 Attach the Adhesive pad to the windscreen

Firmly press the adhesive pad to the clean area of windscreen.

Press for 5 seconds to ensure a strong bond between the pad and windscreen.

Note: When positioning the pad on the windscreen, ensure that the thick end is pointing down, with the 'notch' at the bottom. This will allow you to attach the mount the correct way up.



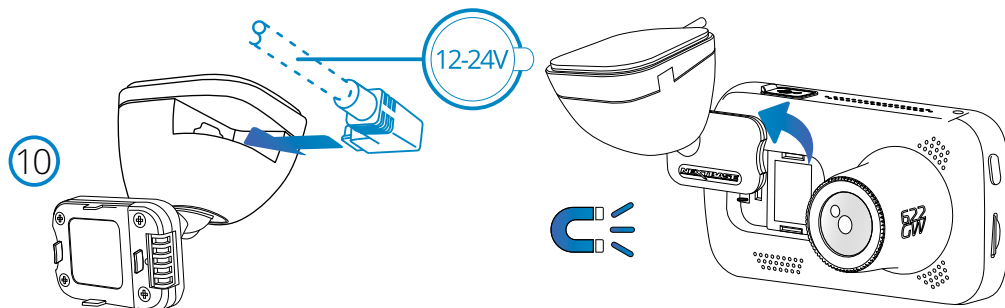
9 Reattach the mount to the adhesive pad

Ensure that the adhesive pad is securely attached to the windscreen.

Slide the mount back onto the pad, moving from left to right.

A click will be heard when the mount connects to the pad

Check that the mount is securely attached.

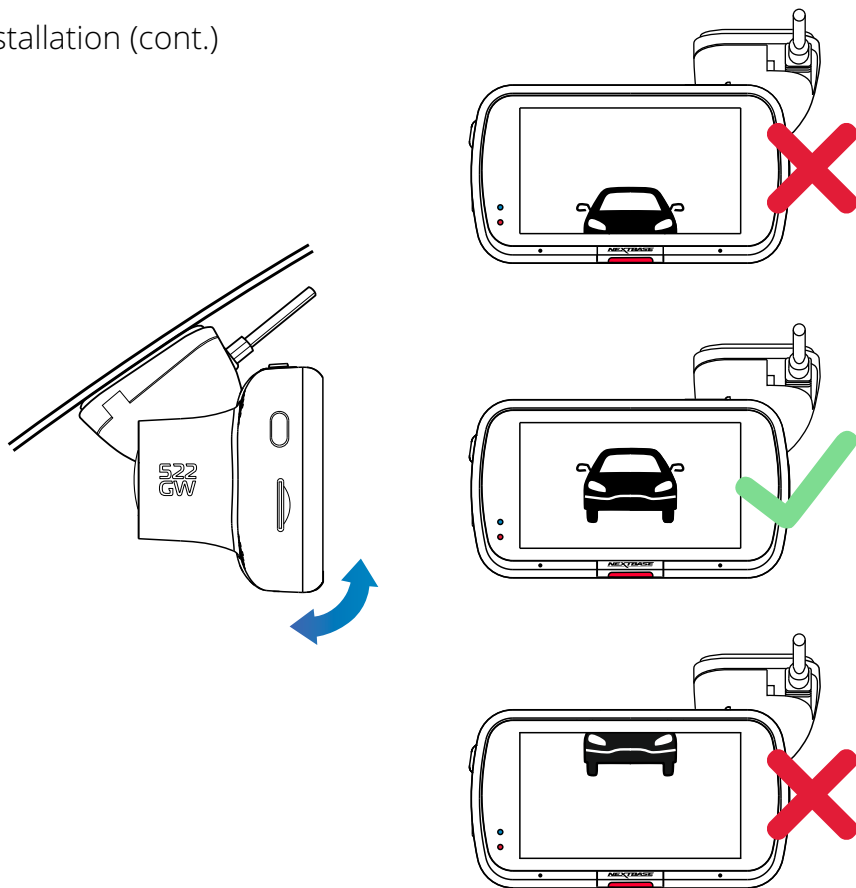


10 Connect power and Dash Cam

Connect the power cable to the mount (attached to the windscreen).

Connect the Dash Cam to the mount using the magnetic pull to guide the Dash Cam.

Once the Dash Cam is connected, check that the Dash Cam feels secure.



13

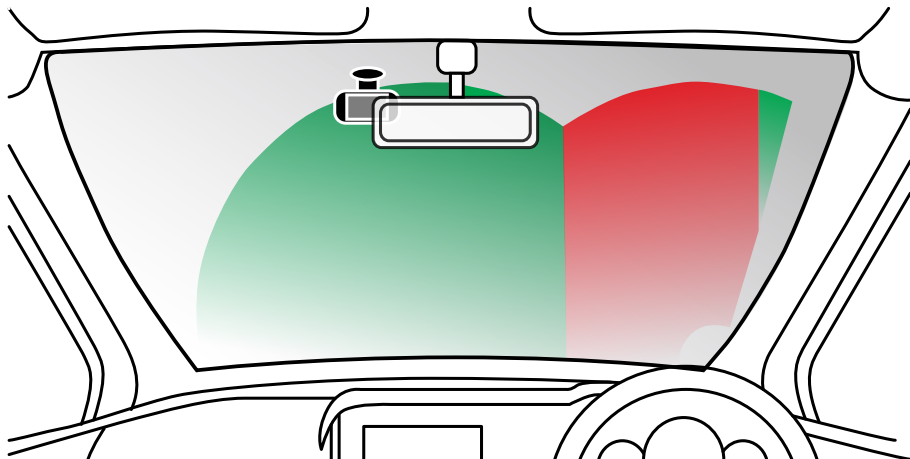
13 Adjusting the Dash Cam

With the mount attached to the windscreen, ensure that objects on the Dash Cam display are level and adjust as required. Ensure that the road ahead is at the centre of the image, in the central third of the display. If too much of the sky is visible it may risk underexposing details on the road; ensure that the road ahead is clearly visible on the Dash Cam display. Do NOT attempt to adjust the Dash Cam while driving.



Positioning Your Dash Cam

Please read and follow the notes below for the safe operation of your Dash Cam within your vehicle.



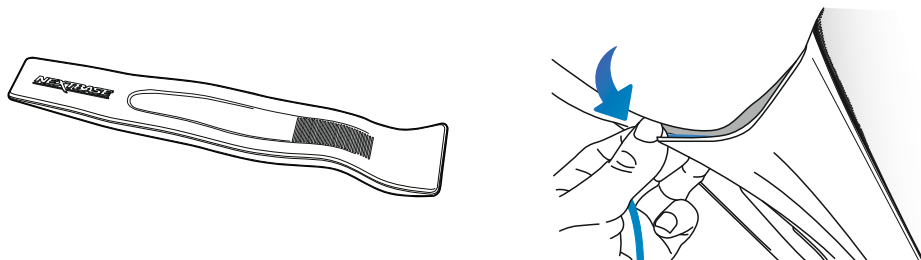
Before using the device on your windscreen, check the state and local laws and ordinances where you drive. Some laws prohibit or restrict the placement of objects on the windscreen of a motor vehicle. IT IS THE USER'S RESPONSIBILITY TO MOUNT THE DEVICE IN COMPLIANCE WITH ALL APPLICABLE LAWS AND ORDINANCES.

Always mount your Nextbase™ device in a location that does not obstruct the driver's view of the road. Nextbase does not assume any responsibility for any fines, penalties, or damages that may be incurred as a result of any state or local law or ordinance relating to the use of your Nextbase device.

As per the installation instructions, you must install the Dash Cam so it does NOT obstruct the driver's view of the road (red, above), preferably on the passenger side of the vehicle and behind the rear view mirror. The Dash Cam needs to view through a clear section of windscreen in an area swept by the windscreen wipers (green, above). However, the Dash Cam should be installed so as not to intrude significantly within the wiped area. A 40mm intrusion into the green wiped area is the maximum permitted by UK law.

Hiding the Cable

Make sure the hanging cable does not obstruct your view out of your rear window. Ensure that there are no kinks in the cable as you are stowing it. If necessary, use the cable tidy tool supplied with your Dash Cam; this can be used to help pry open the lining of your car (see illustration below).



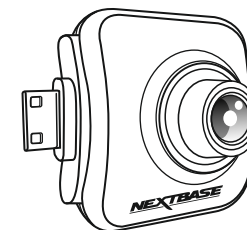
Notes On Positioning Your Dash Cam

- Do NOT mount the Dash Cam in front of the driver, as depicted by the red area in the illustration to the left of this page.
- When installing the Dash Cam in a vehicle, always place the device securely against the windscreen and where possible conceal the power cable under trim.
- Make sure that the Dash Cam power cable does not interfere with the drivers operating controls, such as the steering wheel, pedals or gear levers.
- Do NOT mount the Dash Cam in front of an airbag field of deployment or in a position to obscure any mirrors.
- Clean the windscreen at the point of location, prior to fitting the Dash Cam.
- The 622GW comes with a built-in polarising filter on the lens, designed to reduce glare and improve the clarity of your recordings. Looking at the Dash Cam's display, rotate the bezel at the front of the lens until the captured image is at it's clearest, and glare is at a minimum. For more information on the polarising filter and setup, see page 17.
- It is recommended NOT to operate the Dash Cam whilst driving. The automatic Start-Stop technology incorporated within the device negates any need to operate the controls whilst driving.
- Adjust any settings or review recordings whilst stationary, not whilst driving.
- After the preliminary SETUP has been carried out upon the Dash Cam, adjust the Screen Saver settings to either ON or Speed display (showing only your speed). Turning the Screen Saver ON will blank the screen 30 seconds after starting the vehicle and therefore the screen will NOT be a distraction to the driver.

Accessories

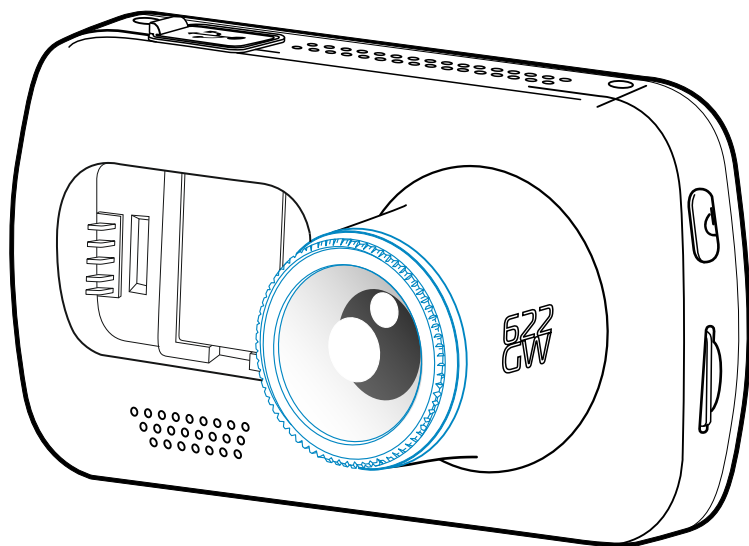
Multiple accessories can be purchased for your Nextbase Dash Cam, including a rear window camera, Dual USB charger, and a rear facing camera. Some of these products can effect where you should position your camera.

For more information on how to position and use these products, download the 'Nextbase Accessories Manual' PDF at www.nextbase.com.



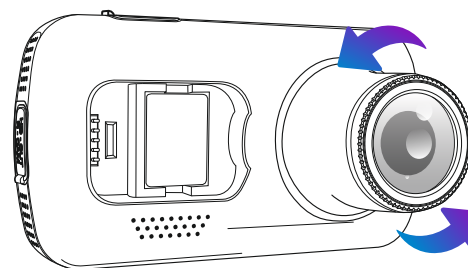
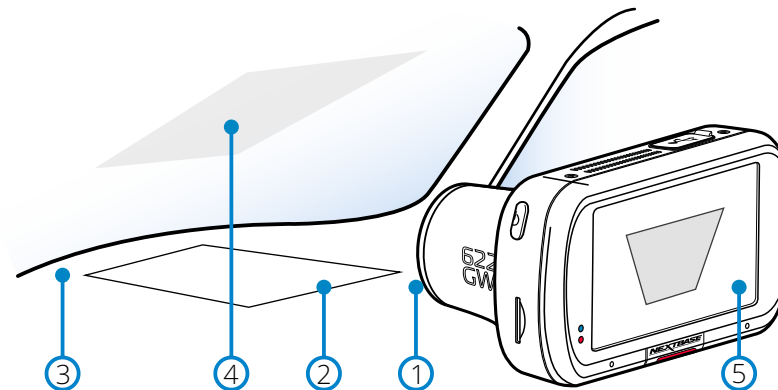
Polarising Filter

The Polarising Filter (highlighted on the Dash Cam, below) is designed to reduced the glare on your windscreen as seen through the Dash Cam, allowing you to record the road ahead clearly. In bright sunlight the filter will also enhance the colour and contrast levels to help capture number plates and other vital details.



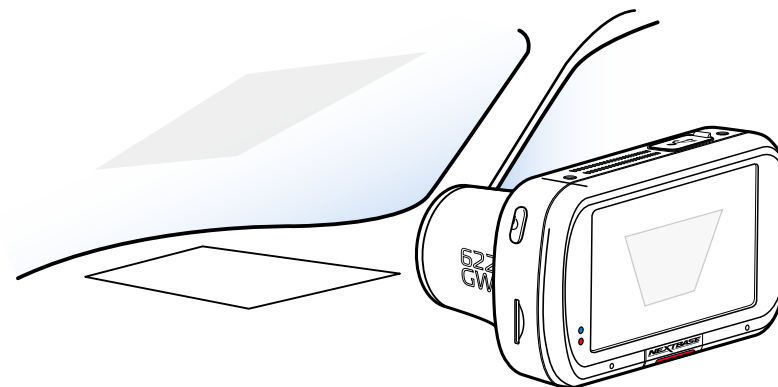
Adjust the Polarising Filter

The most effective way to set up your Polarising Filter (1) is to place a piece of plain white paper (2) on your dashboard (3) under the rear view mirror. With your camera turned ON you will see the reflection (4) of the paper in the LCD screen of the Dash Cam. Look at the reflection (4) on the windscreen through the Dash Cam display (5).



Gently rotate the front bezel to adjust the filter. Rotate the filter until the windscreen reflection can no longer be seen on the Dash Cam display (see below).

Once the reflection can no longer be seen, operate the Dash Cam normally. Please note; it may not be possible to fully remove the reflection, but using the Polarising Filter will noticeably improve your video quality.



Do not place fingers on the glass lens of the filter.
Do not adjust the filter while in control of the vehicle

The above diagram is for illustration purposes only.

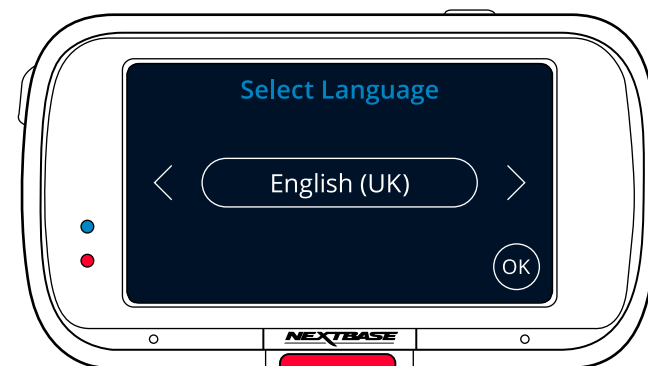
First Time Use



Before you can use your Dash Cam, it is *essential* to make sure it is fully charged. Connect your Dash Cam via the USB port to a home power source such as a PC or home USB socket for approximately 2 hours.

To ensure the set up of this Dash Cam is as quick and simple as possible, there is an easy to follow 'First Time Use' menu.

This menu is used to set your preferred Language, Country (inc. Time Zone) and Speed Units.



This menu will appear when:

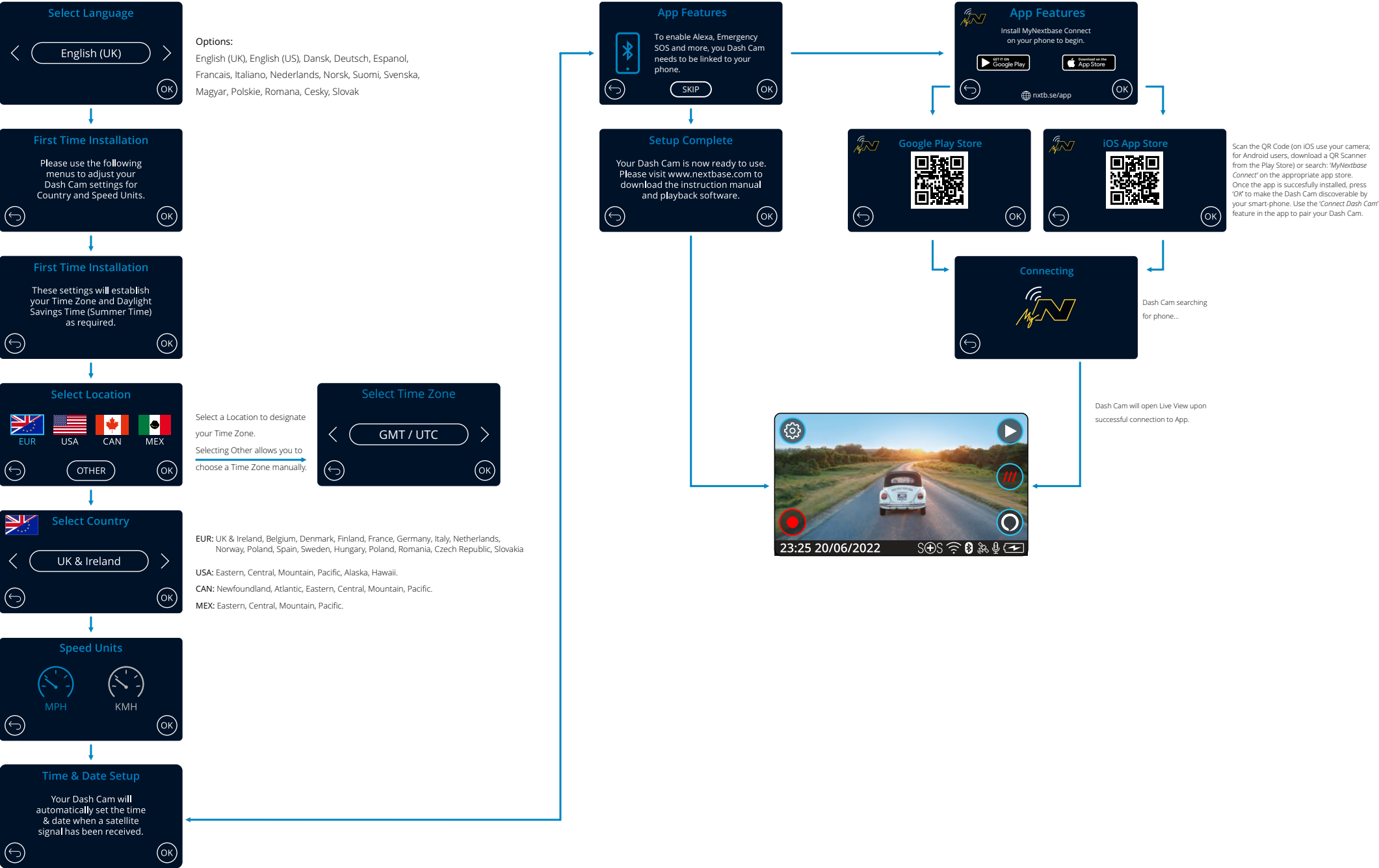
1. The Dash Cam is first turned on.
2. There has been a Firmware Update applied to the Dash Cam and 'Keep User Settings' has been set to OFF. If it is set to ON, your Dash Cam will start normally, with your settings intact.
3. After the Dash Cam's settings have been reset, by using the 'Default Settings' option in the Setup Menu.

Follow the on-screen instruction to select the Language, Country, and Speed Units. The settings that influence the displayed time & date will be applied upon receiving a GPS connection.

Note: The First Time Use menu is in place to get you up and running quickly and smoothly. The settings you choose during First Time Use can be changed at any later time in the setup menus.

See next page for the First Time Use screens.

First Time Use - Screens



Menus

Press the 'Menu' button (top left of the Dash Cam display) to enter the Dash Cam's menu system.



The default settings have been carefully selected to allow you to use your Dash Cam without the need to change any settings. However, should you wish to change a setting then please see below:

- Use the touch screen to select a settings submenu (Video Settings, Setup, Driver Assistance, Connect Apps)
- Once in the submenu, use the touchscreen to select which function to change.
- When swiping through the menu pages, swipe from the middle of the screen, to avoid accidentally selecting a submenu/function.

Notes:

- Menus are not accessible whilst the Dash Cam is recording.
- Within the Setup Menu there is a 'Default Settings' option to allow you to reset the Dash Cam to the factory defaults, if required.

Menu Tree:

See below for the settings to be found under each submenu:

Video Settings:

- Resolution
- Exposure
- Video Length
- Audio
- Time Stamp
- Speed Stamp
- GPS Stamp
- Model Stamp
- Dual Files
- Time lapse
- Number Plate
- G Sensor
- Enhanced Image Stabilization
- Extreme Weather Mode

Setup:

- Screen Saver
- Alerts
- Recording History
- Parking Mode
- Language
- Country
- Time Zone / DST
- Time & Date
- Speed Units
- Device Sounds
- Screen Dimming
- Auto Power Off
- Keep User Settings
- System Info
- Format SD Card
- Default Settings

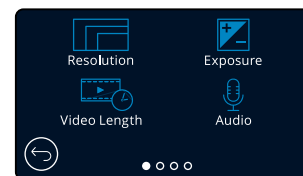
Driver Assistance:

- Emergency SOS
- Reversing Camera
- what3words

Connected Apps:

- MyNextbase
- Amazon Alexa

Video Settings



1 Resolution

Change your Dash Cam's recording resolution.

Options: 4K @ 30FPS, 1440P @ 60FPS, 1440P @ 30FPS, 1080P @ 120FPS, 1080P @ 60FPS, 1080P @ 30FPS

Default: 4K @ 30FPS

| Selection | Front Camera Resolution | Rear Camera Resolution (if connected) |
|----------------|-------------------------|---------------------------------------|
| 4K @ 30FPS | 3840 x 2160 | 1920 x 1080 @ 30FPS |
| 1440P @ 60FPS | 2560 x 1440 | 1920 x 1080 @ 30FPS |
| 1440P @ 30FPS | 2560 x 1440 | 1920 x 1080 @ 30FPS |
| 1080P @ 120FPS | 1920 x 1080 | 1920 x 1080 @ 30FPS |
| 1080P @ 60FPS | 1920 x 1080 | 1920 x 1080 @ 30FPS |
| 1080P @ 30FPS | 1920 x 1080 | 1920 x 1080 @ 30FPS |

Notes:

- When recording in 1080P @ 120 FPS, you will be able to view your video in Slow Motion on your Dash Cam, allowing you to pick out details that may be missed in full speed video.
- The resolution of an attached Rear Facing Camera is fixed at 1080P. The resolution or frame rate of the Rear Camera cannot be altered independently of the Front Facing Camera; the two resolutions are linked together to ensure maximum performance.
- 1080p @ 120 FPS does *not* support EIS or Extreme Weather Mode. If either of these is selected with 1080p @ 120 FPS selected, the Dash Cam will automatically drop down to the nearest compatible resolution.
- For Image Stabilisation/Extreme weather there are some limitations; see page 21 for details.
- See the table above for the Front & Rear Camera resolution combinations:

2 Exposure

Adjust the exposure level for different lighting conditions.

Options: Values range from -6 to +6

Default: 0

3 Video Length

Set the length of the individual recorded video files. The Dash Cam will continue recording, filling the memory card. When the memory card becomes full, the oldest file will be automatically deleted to make space for the new recording.

Note: Old Protected Files can be overwritten; back up important files as soon as possible to avoid losing your footage. *See page 6 for more details.*

Options: 1 minute, 2 minutes, 3 minutes

Default: 1 minute

Note: If 'Recording History' is set to Minimum (as required in some territories) the Video Length is locked at 1 minute. This cannot be changed until Recording History is set to Maximum.

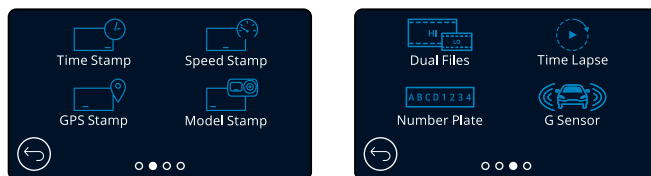
4 Audio

Turn On/Off the microphone for video recording.

Options: On and Off

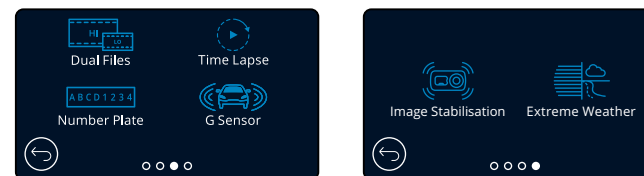
Default: On

Video Settings (cont.)



- 5 **Time Stamp**
Turn On/Off the time and date stamp shown on recorded files.
Options: On and Off
Default: On
- 6 **Speed Stamp**
Turn On/Off the speed stamp shown on recorded files.
Options: On and Off
Default: On
- 7 **GPS Stamp**
Turn On/Off the location data stamp shown on recorded files.
Options: On and Off
Default: On
- 8 **Model Stamp**
Turn On/Off the Dash Cam model stamp shown on recorded files.
Options: On and Off
Default: On
- 9 **Dual Files**
When recording, both a high and low quality video are saved. The smaller file size of the low quality video means it is quicker to transfer and edit within the app. If a Rear-Cam is attached, and Dual Files is switched ON, High and Low resolution files will be saved for the Rear view as well, giving you a total of 4 files (Front High, Front Low, Rear High, Rear Low).
Note: Recording both high and low resolution versions will take up more space on the memory card.
Options: On and Off
Default: On
- 10 **Time Lapse**
Time Lapse recording is a technique whereby the frequency at which file frames are captured (frame rate) is lower than that used when playing back the recording. Time Lapse recording can be considered the opposite of slow motion, as when the recording is played back time appears to be moving faster. For example, a recording taken over three minutes would be played back as a 30 second movie.
Notes: - When Time Lapse is turned On, Recording History will be turned Off.
- Time lapse is considered as a leisure activity setting and not for use in order to collect evidence in the case of an incident. Time Lapse should be turned off for normal driving conditions.
Options: 3 minutes, 30 minutes, Off
Default: Off
- 11 **Number Plate**
Input your vehicle's number plate to add a number plate stamp to your recordings.
Default: Off

Video Settings (cont.)



- 12 **G Sensor**
Turn off or adjust the sensitivity of the internal G Sensor. The G Sensor detects forces which will protect the current recording in the event of a collision. The higher the G Sensor sensitivity, the less force will be needed to trigger automatic file protection.
Options: Off, Low, Medium, High
Default: Medium
- 13 **Image Stabilisation**
Enhanced Image Stabilisation is used to reduce vibrations from your vehicle seen during video playback, providing your with a smoother and clearer image. Please note that EIS cannot be applied to Rear Cameras (if connected).
If EIS is turned On with a Rear Camera connected, the Front Camera Resolution will be 1440P @ 30 FPS or 1080P @ 60 FPS. The Rear Cam will remain at 1080P@ 30 FPS, to ensure maximum performance.
Options: On and Off
Default: Off

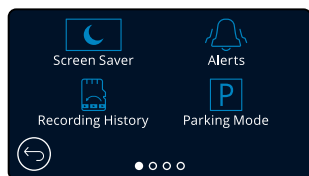
| | Image Stabilisation | Extreme Weather |
|------------------------------------|---------------------|-----------------|
| 4K 30fps (3840x2160 @ 30 FPS) | Yes | Yes |
| EIS/EW Applied to Rear Camera ? | No | No |
| 1440P 60fps (2560x1440 @ 60 FPS) | No | No |
| EIS/EW Applied to Rear Camera ? | No | No |
| 1440P 30fps (2560x1440 @ 30 FPS) | Yes | Yes |
| EIS/EW Applied to Rear Camera ? | No | No |
| 1080P 120fps (1920x1080 @ 120 FPS) | No | No |
| EIS/EW Applied to Rear Camera ? | No | No |
| 1080P 60fps (1920x1080 @ 60 FPS) | Yes | Yes |
| EIS/EW Applied to Rear Camera ? | No | No |
| 1080P 30fps (1920x1080 @ 30 FPS) | Yes | Yes |
| EIS/EW Applied to Rear Camera ? | No | No |

Notes:

- When EIS is turned on with the resolution set at 4K, the resolution will be 2704 x 1520 expanded to 4K .
- See the above chart for the resolutions as applied to the Front and Rear Facing Cameras with EIS turned ON. See 'Resolution' on page 20 for Camera resolution with EIS turned OFF.

- 14 **Extreme Weather**
When activated, the Dash Cam is able to more accurately record in foggy and misty conditions, allowing you to see details such as number plates in poor visibility conditions. Please note that Extreme Weather mode does *not* apply to any connected Rear Facing Camera.
Options: On and Off
Default: Off
Notes: Extreme Weather Mode cannot be applied to 1440p @ 60 FPS or to 1080p @120 FPS. if Extreme Weather Mode is turned on with either of these resolution selected, the Dash Cam resolution will automatically drop down to the next compatible level.

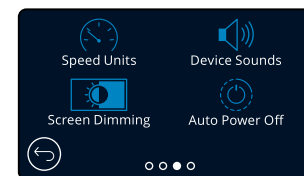
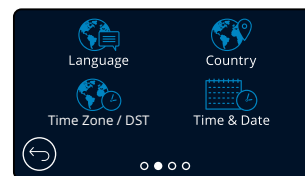
Setup Settings



- 15 Screen Saver**
Turn on the screen saver function to shut down the screen after 30 seconds without any interaction. With the screen off, recording will continue as normal. Touch the display to re-open the screen. You can also choose for the Screen Saver to show your current speed (GPS signal required).
Options: On and Off and Speed Display
Default: Off
- 16 Alerts**
Turn On/Off the ascending/descending beeps that sound when a recording starts/stops, the tone when there is an SD Card error, and the chime that sounds when a file is protected.
Options: On and Off
Default: Off
- 17 Recording History**
In some territories, there are laws prohibiting the amount of footage your Dash Cam should hold. The default setting is 'Maximum', where your Dash Cam records and stores videos without restriction.
If 'Minimum' is selected you will first be asked to Format (wipe) your SD Card; be sure to back up any files you wish to keep before doing this. If you choose not to Format the SD Card, no action is taken and the function will not be activated.
Once the SD Card has been formatted, the file recording length will be automatically set to 1 minute. The Dash Cam will now be limited to storing only 4 unprotected files at any one time. When a new file is recorded it will overwrite the oldest file, keeping the number of stored files at the maximum of 4.
As protected files (i.e. recordings of incidents) cannot be overwritten, these do not count towards the 4 file maximum, and are stored to the capacity of the SD Card.
When Recording History is turned On, Time Lapse will be turned Off.
Options: Maximum and Minimum
Default: Maximum
- 18 Parking Mode**
When Parking Mode has been turned on, the Dash Cam enters standby mode when the 12Vdc supply has been turned OFF (typically removing your ignition key).

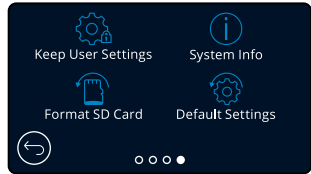
The Dash Cam will also enter standby mode if no physical movement is detected for 5 minutes, this is designed to allow use of a permanent 12Vdc supply, i.e hard-wire kit.
See page 6 for more details
Should physical movement of the vehicle be detected, the Dash Cam will power on and start recording a 45 second protected video. If no further physical movement is detected then the Dash Cam will return to standby mode, if physical movement is detected subsequently, then the camera will continue to record normally, i.e. driving once more.
Options: On and Off
Default: Off

Setup Settings (cont.)



- 19 Language**
Select your preferred language.
Options: English (UK), English (US), Danish, German, Spanish, French, Italian, Dutch, Norwegian, Finnish, Swedish, Polish, Romanian, Czech, Slovakian and Hungarian
Default: Follows your First Time Use selection.
- 20 Country**
Select your country to adjust your Dash Cam's time display.
Options: EUR, USA, CAN, MEX, Other
Default: Follows your First Time Use selection.
- 21 Time Zone/DST**
Manually adjust your time zone to adjust your Dash Cam's time display. Manually changing your time zone will change your Country setting to Other.
Options: -12 to +12
Default: GMT / UTC
- 22 Time & Date**
Adjust the time & date as required. Press MENU to exit and return to the Setup Menu.
Note: Time and date settings will be over-written upon satellite connection.
- 23 Speed Units**
Choose between MPH and KMH
Options: MPH and KMH
Default: MPH
- 24 Device Sounds**
Turn On/Off the beep that sounds when the touch panel is pressed, and startup/shutdown sounds.
Options: On and Off
Default: On
- 25 Screen Dimming**
The Dash Cam automatically adjusts the brightness of the display to match ambient light levels. This is to ensure that a bright screen is not a distraction while driving at night.
Options: On and Off
Default: Off
- 26 Auto Power Off**
While recording, if Auto Power Off is turned OFF and the Dash Cam loses power: the Dash Cam will turn off after 10 seconds.
While recording, if Auto Power Off is turned ON and the Dash Cam loses power: the Dash Cam will turn off after 30 seconds.
Options: On and Off
Default: Off

Setup Settings (cont.)



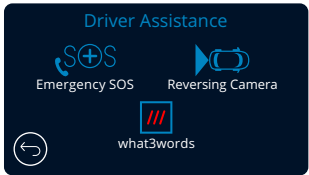
- 27 Keep User Settings**
Turn this ON in order to keep your preferred individual user settings during the Dash Cam firmware update process.
Select OFF in order to clear all user settings and return them to defaults during the Dash Cam update process.
Options: On and Off
Default Setting: On
- 28 System Info**
Information such as Dash Cam model, Battery status, Firmware version, and SD card information can be found here. This information covers multiple screens (pages), swipe left or right on the display to scroll through as required.
- 29 Format SD Card**
Format the inserted SD card. This will delete all content. If the format is unsuccessful, a message will appear on the display;
"Format failed, please try another SD Card (U3, 128 GB Max)."
- Note:** For stable performance, it is recommended that you format the SD card every 2-3 weeks. You should only do this AFTER you've downloaded any files from the card that you may want to keep.
- 30 Default Settings**
Resets the Dash Cam to default settings. Your recordings will not be affected.

Driver Assistance



- 31 Emergency SOS**
See next page (page 24)
- 32 Reversing Camera**
With a rear-facing camera connected (Rear View, Cabin View, Rear Window), tapping the Rear View Display on the screen will make it full screen (tap again to minimise).
With the Reversing Camera function activated, when the Rear View Display is in full screen mode, the image will be flipped horizontally to mimic looking in a mirror, making it easier to reverse. Recordings made with Reversing Camera ON are not affected.
- Note:** Objects may appear further away than they are in reality; always stay aware of your surroundings while driving and do not rely exclusively on the Dash Cam while reversing.
Options: On and Off
Default: Off
- 33 what3words**
what3words has divided the globe into 3m squares and given each one a unique 3 word address. It means everywhere can be located with just three words. When your vehicle is at a standstill you can press the what3words button on your Dash Cam's Live View to bring up your unique 3 word address, allowing others to quickly and accurately pinpoint your location.
See page 37 for further details about what3words.
Turning what3words Off will hide the button that appears on your Dash Cam's Live View Screen.
Options: On and Off
Default: On

Driver Assistance - Emergency SOS



In order for this function to work, you must have the 'MyNextbase Connect™' app installed on your smart-phone (or similar device), have an internet connection, and have Bluetooth turned on. 'MyNexbase Connect' can be downloaded from the Apple App Store® or Google Play®. Use the QR codes below, or search for 'MyNextbase Connect' in the relevant store.

34 Emergency SOS

Your Nextbase™ Dash Cam and MyNextbase Connect App features life-saving crash detection and emergency alerting technology. It is designed to automatically and directly connect you to the nearest Ambulance Service in the event of an accident when you are unable to call for assistance.

If your Dash Cam detects a crash, the MyNextbase Connect app monitors key sensors in your phone. If you are unable to call for help, it will automatically send your last known GPS location, medical and vehicle details to the nearest Emergency Service within minutes of the crash.

Providing you have a valid subscription, you can drive with total peace of mind; safe in the knowledge that your phone is being monitored by this award-winning technology.

App

Once MyNextbase Connect is installed, you must set up Emergency SOS with your personal and medical information. Follow the Emergency SOS setup menu in the app, filling out the information fields. This will include information such as your name, medical history, and any pre-existing conditions, Providing accurate medical and vehicle details helps emergency responders locate and treat you as quickly and appropriately as possible.

You will also be asked to enter your mobile phone number, as this will be the number the emergency services will call in the event of an incident. When entering your phone number, be sure to enter it with your country dialling code (see below for examples):

| GB | FR | ES | NL | NO | FI | SE | DK | DE | IT | US |
|-----|-----|-----|-----|-----|------|-----|-----|-----|-----|----|
| +44 | +33 | +34 | +31 | +47 | +358 | +46 | +45 | +49 | +39 | +1 |

Once you enter your phone number you will be sent a verification code to enter. This will confirm that the phone you are using can be contacted by emergency services. If you do not receive a verification request, re-enter your phone number. Once you have entered all of your Emergency SOS information and are paired with the Dash Cam, the Dash Cam will automatically turn Emergency SOS ON.

Dash Cam Screen Icon

If Emergency SOS is turned ON and you have not set up your Emergency SOS information on the app, or it has disconnected, you will see a pop-up on your Dash Cam: "Emergency SOS Error. Please open MyNextbase Connect on your phone to reconnect". Once turned ON, the Emergency SOS icon will appear on the Dash Cam's Live view screen.

- No Icon = Feature turned OFF
- Flashing SOS icon = Flashing icon; establishing connection
- Solid SOS icon = Solid Icon; connected



You can turn the Emergency SOS function ON or OFF in the Dash Cam's Emergency SOS menu. Your information is stored on the app, and can be edited or deleted at any time.

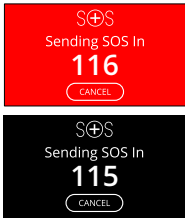
In the event of an incident

The camera immediately notifies the MyNextbase Connect app to begin monitoring key sensors in your smartphone such as GPS, accelerometers and the pedometer. The camera and app will notify you that it has begun monitoring your smartphone's sensors with on-screen messages and an alarm tone.

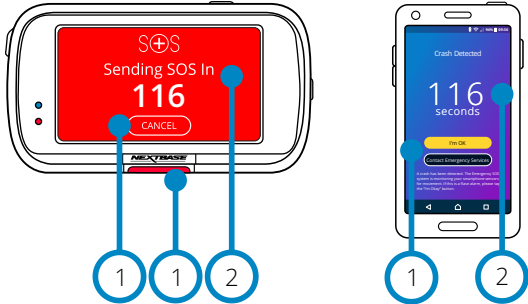
Should the accident render you unconscious and/or you are unable to cancel the on-screen Emergency SOS countdown, the MyNextbase Connect app will automatically send a crash alert containing your GPS location, mobile number, medical details and vehicle information to the Emergency Services. If you are ok, you can deactivate the alert manually or respond to the follow-up call from an emergency services operator.

If the alert does not get cancelled, Emergency Response operators will automatically begin the process of dispatching paramedics to your last known location.

If the crash detection technology within the camera is triggered inadvertently, the MyNextbase Connect app is designed to detect a range of vehicle and customer movements such as continued driving, walking around or moving the phone. It will automatically cancel the Emergency SOS process if movement is detected as we expect you can call the emergency services if medical assistance is required.



During countdowns the screen on the Dash Cam will alternate between red and black backgrounds to be as noticeable as possible.



- 1 Press to cancel the countdown; emergency services will not be automatically contacted.
- 2 Countdown; time remaining until emergency services are automatically contacted.

When the countdown is cancelled, the Dash Cam and App will revert to normal usage mode. See page 25 for an additional overview of the Emergency SOS system.

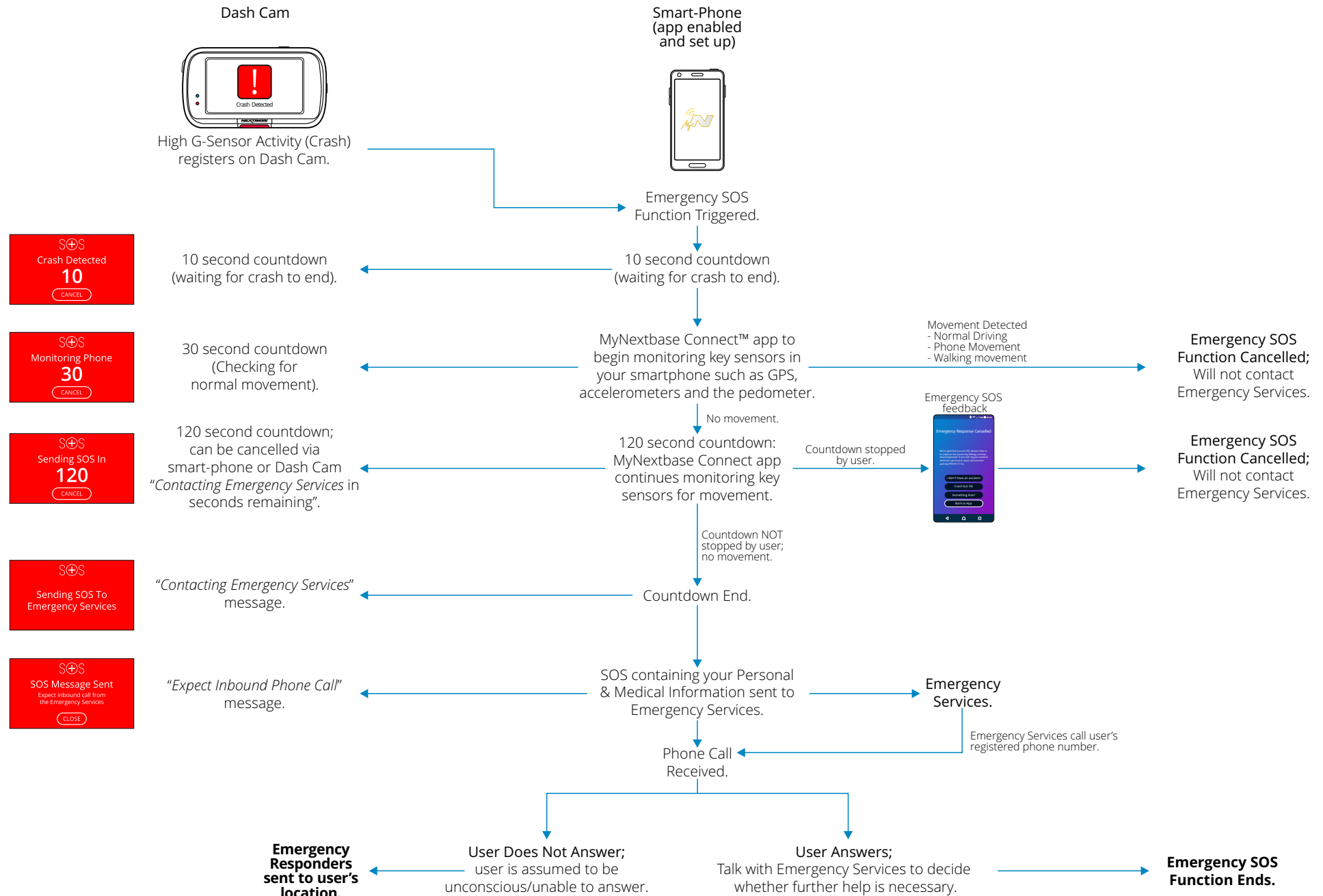
Options: On and Off
Default: Off

Please note that the emergency services response may differ from territory to territory, and not all territories are covered within this feature. If you are unsure, or would like further information, refer to the Emergency SOS FAQs on page 26 or contact our support team at support@nextbase.com

Emergency SOS is not available in all regions; check the MyNextbase Connect app for the list of supported areas

Emergency SOS (cont.)

The below diagram illustrates how the user's smart-phone and Dash Cam operate in the event of an incident.

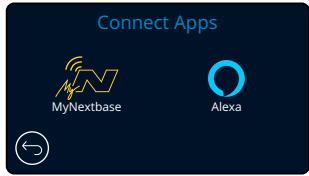


Emergency SOS Frequently Asked Questions

The below points are there to answer any further questions you might have about the Emergency SOS system.

| Question | Response |
|---|--|
| If I crash, will you notify the Police? | No. The MyNextbase Connect™ app automatically sends your location, medical and vehicle details to the nearest Ambulance or Emergency Response Service only. |
| Can I set it off inadvertently? | The Emergency SOS feature has a range of safeguards to ensure it won't alert the emergency services unless it has validated that assistance is required. This is tried and tested technology has been UK Government approved for connecting directly to the emergency services. |
| What happens if I receive a call and don't need an ambulance? | The Emergency SOS countdown gives you 150 seconds to deactivate the phone sensor monitoring process. Failure to deactivate will then result in a call from the Emergency Services operator. If you are ok you can simply cancel the process via the camera or app within 150 seconds or answer the emergency services call. If you do not manage to do either, simply press the 'Call Emergency Services' button and tell the operator that the crash detection feature sent an alert and that you missed the call back. |
| What happens if I am out of mobile phone signal range? | In the event of an accident, the MyNextbase Connect app requires a network connection and mobile signal. The network connection is needed to send a very small data packet (about 1.5kb) to the emergency services, and the mobile signal is required for the Emergency operator to call your phone. If there is no network coverage, then the MyNextbase Connect app cannot send the data. |
| What happens if the phone battery dies? | If your phone's battery dies while the MyNextbase Connect app is monitoring your phone's key sensors, then this data can NOT be sent. |
| What testing and evaluation has the MyNextbase Connect App undergone? | <p>Due to the nature of the Emergency SOS feature and it's ability to connect directly to the Emergency Services, rigorous testing and evaluations are carried out on a regular basis. These include but are not limited to:</p> <ul style="list-style-type: none">- Regular camera/app crash, processing and connectivity testing- Confidence and accuracy testing- Emergency Service integration and process testing |

Connect Apps



35 MyNextbase Connect

In order for this function to work, you must have MyNextbase Connect™ installed on your smart-phone (or similar device), have an internet connection, and have Bluetooth turned on.

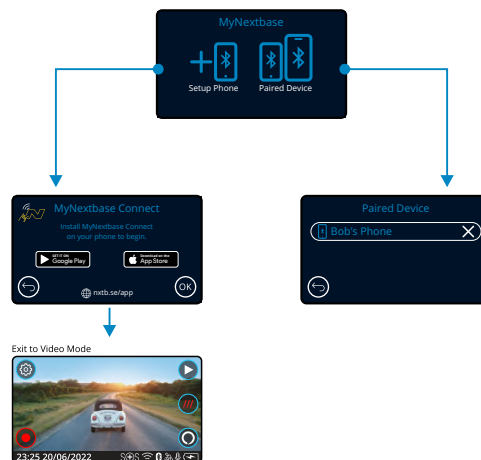
Within this menu, you will be able to manage your connected devices. You will be able to connect and set up new devices (as seen in your Dash Cam's First Time Use), and manage devices which are already connected.

Setup Phone

Install the MyNextbase Connect App from the Google Play Store or the Apple App Store. Once installed, select 'Connect to Dash Cam' on the app. Once a connection is established, a confirmation message will appear on both devices. You may then proceed to use both your Dash Cam and smartphone as usual. Your paired device can be viewed on the 'Paired Devices' screen.

Paired Devices

This screen shows you which smart-phones are currently linked to your Dash Cam. Here you can also unpair devices by pressing the cross (X) to the right of the device's name.



Google Play Store



Apple App Store



This page describes the steps required to connect your Dash Cam to the MyNextbase Connect App. For more information about using the App, see page 32 (MyNextbase Connect).

36 Alexa Built-In

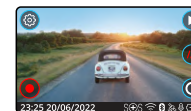
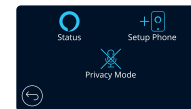
In order for this function to work, you must have both the 'MyNextbase Connect' and the 'Amazon Alexa' app installed on your smart-phone, have an internet connection, and have Bluetooth turned on.

Within this menu, you will be able to turn your Dash Cam's Alexa functions ON or OFF, and manage paired devices. Note that you will need up to date firmware for Alexa to function. On the Dash Cam, you will be prompted to download and install the Alexa App from either the Google Play Store (for Android users), or from the Apple App Store (for iPhone users), using one of the two QR codes below.

Google Play Store



Apple App Store



From the MyNextbase Connect app, click on the 'Learn More' Amazon Alexa button on the Home page. Click to 'Enable' Alexa, and press 'Open in App' to sign in to Alexa using your Amazon login. You must accept all permissions to for Alexa to work. Once your Dash Cam is successfully paired with the Alexa app on you smart-phone you can begin using Alexa.

The Alexa button will appear on your Live View screen as shown in the image, left.

Status

Select to turn Alexa Voice Control ON and OFF.

Setup Phone

You will be prompted to download the Alexa app using one of the two QR codes above.

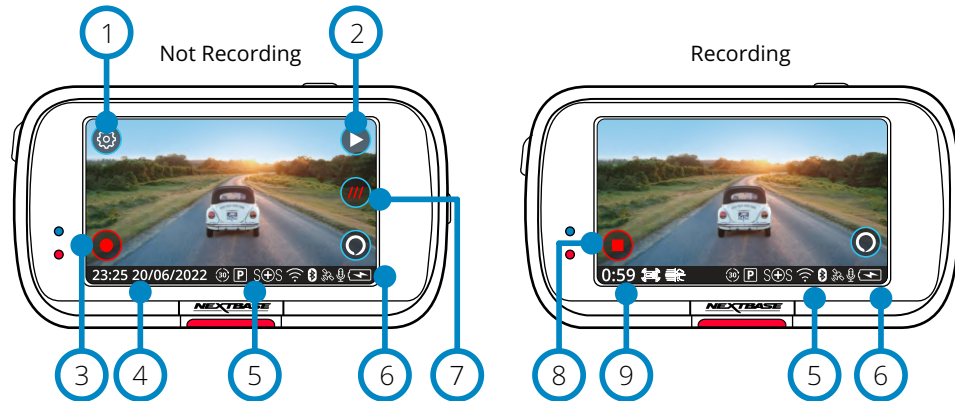
Privacy Mode

With Privacy Mode ON, the Dash Cam will NOT respond to the wake-word, "Alexa". In this instance, the Dash Cam will only respond by using the Alexa button on the Live View screen of the Dash Cam.

This page describes the setup of the Alexa on your Dash Cam. For more information about using Alexa, as well as some prompts to get you started, see page 36.

Video Mode

The key below explains the various information displayed on the screen when your Dash Cam is in Video mode, some icons will only be displayed once the relevant function has been selected within the Video menu, as described below.



- 1 **Settings**
Select to open the Dash Cam's Menu system.
- 2 **Playback**
Select to view recorded videos (protected and unprotected) and photos.
- 3 **Record**
Select to Start recording.
- 4 **Time & Date**
Shows the current time and date. This can be edited in the Setup Menu.
- 5 **Active Functions Bar**
Audio Recording, Bluetooth, Wi-Fi, Emergency SOS, GPS connection, Parking Mode, Time Lapse, EIS & Extreme Weather.
Icons displayed will be dependent on the functions activated in the Settings Menu.
- 6 **Battery Status**
- 7 **what3words**
When your vehicle is stationary, pressing this will show you're your unique what3words address. This address can be passed on to others to allow them to easily locate you. More information about what3words can be found on page 37.
- 8 **Stop Recording (flashing)**
During recording the record button will flash. Press to stop recording.
- 9 **Recording Duration**
While recording, this shows how long the Dash Cam has been recording for.

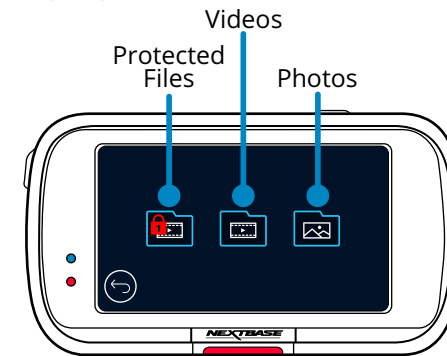
Screen Capture

While recording, tap the centre of the screen to take a photo.

If a Rear Cam is attached, touch the centre of the Front Facing view to take a photo. This will save 2 photos, one from the Front Facing camera, and one from the Rear Facing camera.

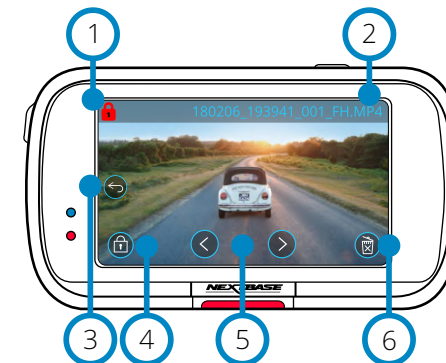
Folder Selection Screen

When you select Playback Mode, you will have a choice of viewing your protected videos, your unprotected videos, or your photos.



Playback Mode - Photo

Preview Mode



- 1 **Protect Icon**
If present, the file is protected; if not present, the file is unprotected.
- 2 **File Name**
- 3 **Back Button**
Return to the Folder Selection Screen (Protected Files, Unprotected Files, Photos).
- 4 **Protect Button**
Press this button to protect/unprotect the file you're viewing.
- 5 **Navigation**
Use the forward and backward arrows to scroll through your photos.
- 6 **Delete**
Delete the current photo. If you try to delete a protected file you will see a pop-up telling you to unprotect the file first.

Preview Mode - On-screen icons timeout

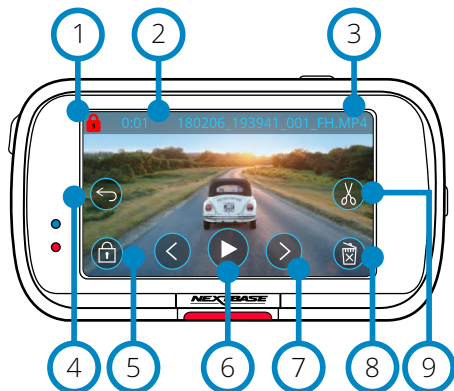


Note: The on-screen icons (navigation, delete, protect, etc.) timeout after 5 seconds. Press the screen to bring up the icons.

Playback Mode - Video

The key below explains the various information displayed on the screen when your Dash Cam is in Playback Mode (Protected/Unprotected Video).

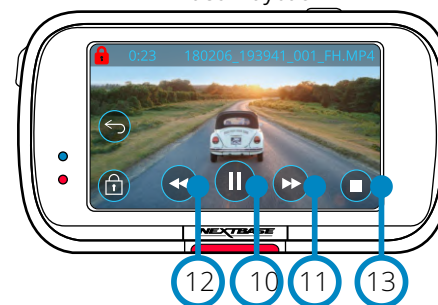
Preview Mode



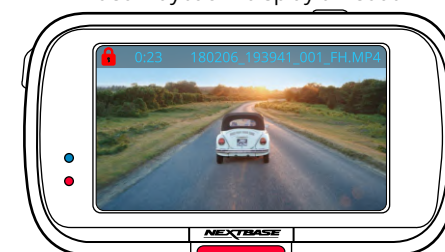
- 1 **Protect Icon**
If present, the file is protected; if not present, the file is unprotected.
- 2 **Recording Length**
Shows the length of the current recording.
- 3 **File Name**
- 4 **Back Button**
Return to the top Playback Menu (Protected Files, Unprotected Files, Photos).
- 5 **Protect Button**
Press this button to protect/unprotect the file you're viewing. You cannot protect/unprotect files during playback. Stop the video to protect/unprotect.
- 6 **Play**
Play the current video file.
- 7 **Navigation**
Use the forward and backward arrows to scroll through your videos.
- 8 **Delete**
Delete the current video file. If you try to delete a protected file you will see a pop-up telling you to unprotect the file first.
- 9 **Edit**
While paused, press to edit the video. See next page for more details.

Playback Mode - Video (cont.)

Video Playback

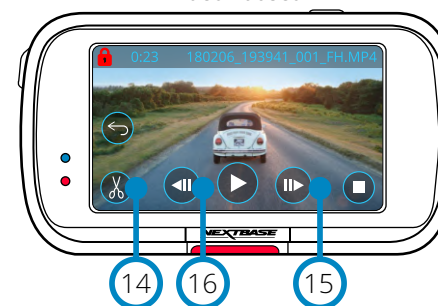


Video Playback - display timeout

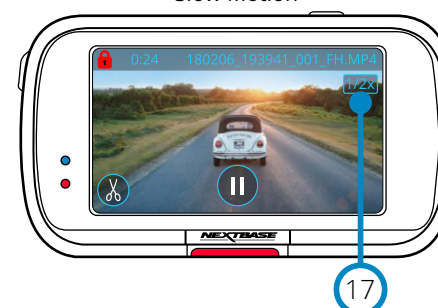


During playback, the on-screen icons will disappear after 5 seconds.
Tap the screen to bring up the controls.

Video Paused



Video - Slow Motion

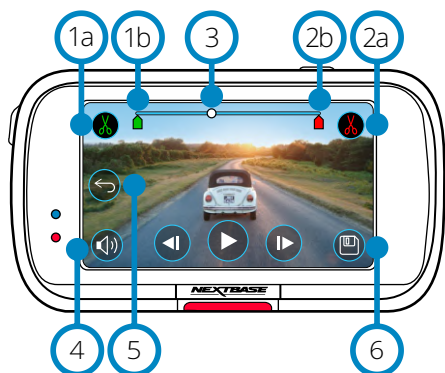




- 10 **Pause**
Press to pause the video playback.
- 11 **Fast Forward**
Press during playback to scroll through x2, x4, x8, and x16 speed.
- 12 **Rewind**
Press during playback to scroll through x2, x4, x8, and x16 speed.
- 13 **Stop**
During playback/paused, press stop to return to Preview Screen.
- 14 **Edit**
While paused, press to edit the video. See next page for more details.
- 15 **Slow Motion - Forward**
While paused, press to play the video at 1/2 speed. Press pause or fast forward to return to normal speed.
- 16 **Slow Motion - Rewind**
While paused, press to rewind the video at 1/2 speed. Press pause or rewind to return to normal speed.
- 17 **Slow Motion Playback Icon**
During playback, this icon will appear to at 1/2 speed.

Playback Mode - Video Editing

The key below explains the various information displayed on the screen when your Dash Cam is in Playback Mode (Protected/Unprotected Video).

Edit Mode



- 1a Trim Start (green)
Press to place Start Indicator on the timeline.
- 1b Trim Start Indicator
Start point of your new file.
- 2a Trim End (Red)
Press to place End Indicator on the timeline.
- 2b Trim End Indicator
End point of your new file.
- 3 Timeline and Position Indicator (White)
Shows your current position in the recording. When you reach the point where you want to start your new file, press Trim Start (1a). When you reach the point where you want to end your new file, press Trim End (2a). This will move the indicators (green/red)
- 4 Audio Recording
Toggle the audio ON/OFF.  
- 5 Back
Pressing Back while editing will take you back to the video preview screen. If you were in the process of editing a video, it will not be saved.
- 6 Save
Press to save the video as a separate file that will appear in your file library. The original file is unaffected.

Directions

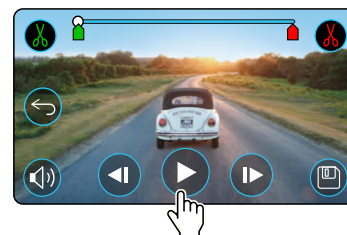
Once in Edit Mode, you will see a white timeline bar with a green indicator and red indicator at either end. A white ball indicates how far through playback of the current file you are.

While paused, press the 'Trim Start' button (top left) to move the green indicator bar to the current point on the timeline. Once saved, anything *before* this point will be trimmed off.

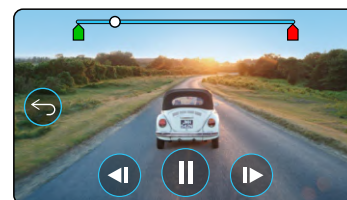
While paused, Press the 'Trim End' button (top right) to move the red indicator bar to the current point on the timeline. Once saved, anything *after* this point will be trimmed off.

During playback, the editing controls are greyed out, and cannot be activated, pause to use the trim tools, remove audio, and save functions.

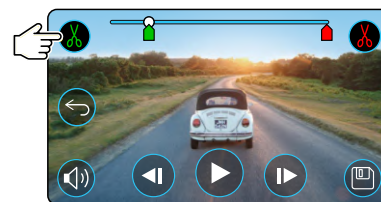
Note: When moving the Start/End trim tools, make sure that the Green (start) indicator comes before the Red (end) indicator on the timeline. If the Red is placed before the Green, the save function will not work.



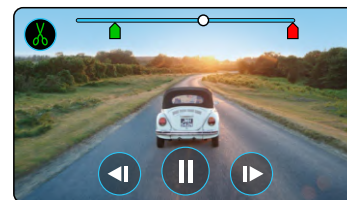
Press Play to begin playback.



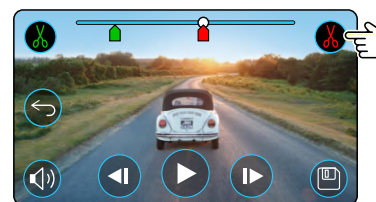
Playback. The white ball indicates your position.



Press Trim Start to move the Trim Start Indicator.



Continue Playback. The white ball indicates your position.

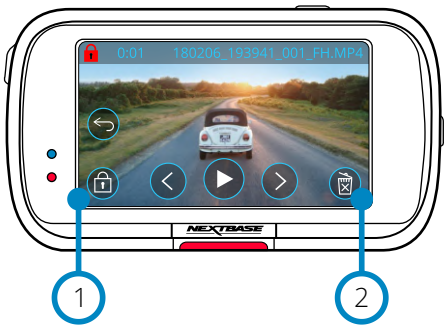


Press Trim End to move the Trim End Indicator. Press Save to export the new file. The new file will be saved the original file name + EDI (i.e. 180125_175618_009_FH_EDI). If you are editing a protected file, the new file will also be protected. The original file is unaffected.

Playback Mode - Protect & Delete

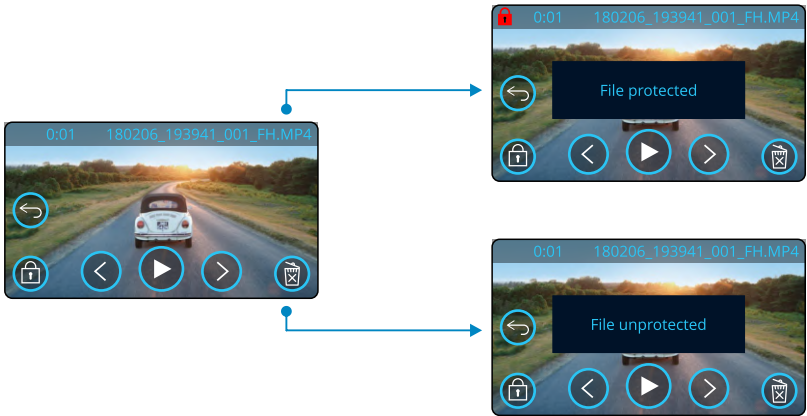
The key below explains the various information displayed on the screen when you are protecting and deleting files.

Preview Mode - Protect and Delete



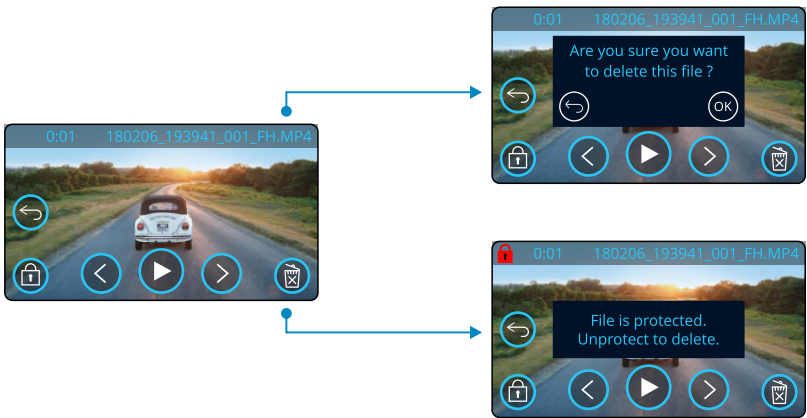
- 1 Protect Button**
Press this button to protect/unprotect the file you're viewing.
- 2 Delete Button**
Delete the current video file. If you try to delete a protected file you will see a pop-up telling you to unprotect the file.

Preview Mode - Protect and Delete



While in Preview Mode, press the Protect Button to protect/unprotect a file. When a file is protected, a red padlock icon will appear in the top left of the screen. You cannot protect or unprotect a video during playback.

Note: When a file is protected/unprotected, it will remain in its original folder.



While in Preview mode, press the Delete Button to delete a file. If the file is protected, you will see a pop-up "File is protected. Unprotect to delete".

MyNextbase Connect™

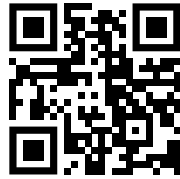


MyNextbase Connect™ is an easy-to-use app that will enable you to effortlessly manage and share your videos. In addition to this, there are features on the Dash Cam that can only be used in conjunction with the app; for example, the Emergency SOS function and Alexa Voice Control. Use the QR Codes below to download MyNextbase Connect App from the Apple App Store® or the Google Play Store®. Please note that the app is only compatible with Nextbase™ Dash Cam models 322GW and above (322GW, 422GW, 522GW, and 622GW).

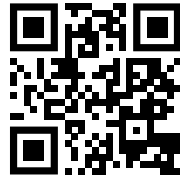
Suitable for:

| | | | |
|-----|---|-----|---|
| 122 | ✗ | 422 | ✓ |
| 222 | ✗ | 522 | ✓ |
| 322 | ✓ | 622 | ✓ |
| GW | | CW | |

Google Play Store



Apple App Store



Features:

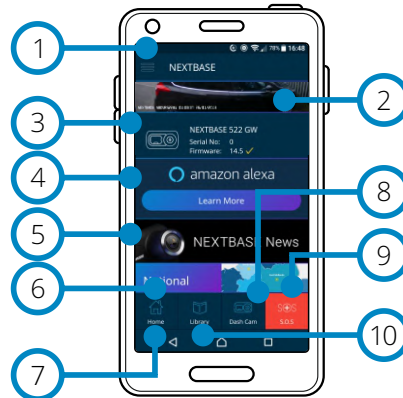
- Camera Live View: see what your Dash Cam is seeing
- Download files from your Dash Cam to your smartphone/mobile device
- Share videos to popular social media platforms
- National Dash Cam Safety Portal
- Emergency SOS services (322GW, 422GW, 522GW & 622GW)
- Check for and install Firmware Updates
- Contact Us details, including Live Chat
- FAQs
- Nextbase™ latest offers and deals

Connect to Dash Cam

In order to make use of the full range of features, you will need to pair your smart-phone with your Dash Cam. To do this, select 'Connect Dash Cam' on the Home Screen. You will need to allow the app to use Bluetooth in order to connect to the Dash Cam. Once you have turned on Bluetooth, the app will automatically begin searching for devices. Make sure your Dash Cam is powered ON and ready to pair, and the Dash Cam will appear as a device on the app screen. Simply select it to connect.

Home Screen

- 1 Menu**
Select to browse features, menus, and settings, including 'Connect to Dash Cam'.
- 2 Dash Cam Live View**
See a live feed direct from your Dash Cam.



MyNextbase Connect Home Screen

- 3 Dash Cam**
Select to pair a new Dash Cam with your smart-phone, or view currently paired devices.
- 4 Amazon Alexa**
Select to link your smart-phone and Dash Cam to the Alexa App to enable voice control of your Dash Cam (see pages 27 and 36).
- 5 Nextbase News**
Select to sign up for new Nextbase products, offers, and updates.
- 6 National Dash Cam Safety Portal**
Upload a video of an incident directly to police services across the UK.
- 7 Home Button**
Select to return to your home screen.
- 8 Dash Cam**
See videos that are stored on your connected Dash Cam.
- 9 Emergency SOS**
Setup Emergency SOS on your Dash Cam. (see pages 24-26).
- 10 Library**
Select to view files you have downloaded to the app (see image, above). If paired with your Dash Cam you will be able to view and manage files on your Dash Cam. If NOT paired with your Dash Cam you will only be able to see files that you have transferred to your smart-phone. Various filters are available to make it easier for you to sort and find your files. From here, you can protect/unprotect videos, and share files with you insurer or to social media.



Video Library

Emergency SOS

In order for this function to work, you must have an internet connection, have Bluetooth turned on, be paired with your Dash Cam, and have your Emergency SOS information set up in MyNextbase Connect. The Nextbase Emergency SOS feature is designed to automatically contact the emergency services in your time of need, and send them to your last known location.

To set up this feature, select the menu button, and select 'Emergency SOS'; you will then be prompted to enter personal and medical information that would help emergency responders locate and treat you as quickly and appropriately as possible.

Please note that this information is stored ONLY on your smart-phone; we will ONLY send it to emergency responders if the Emergency SOS system is triggered.

See pages 24-26 for more information about Emergency SOS setup and usage.

For latest supported operating systems
please see the Play store / Apple store

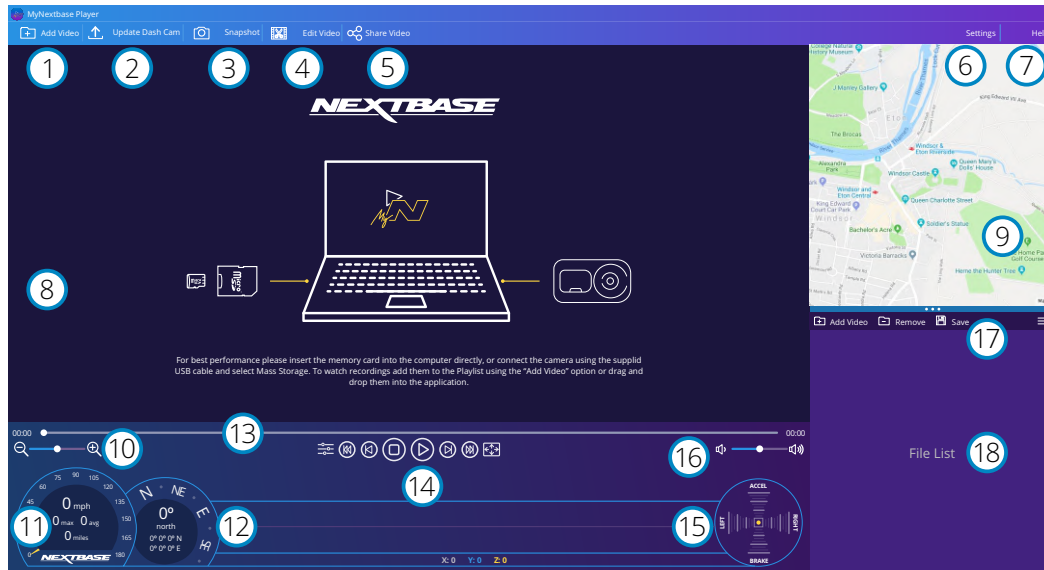


MyNextbase Player - Playback Software



View, edit, and share your footage on your computer with the new easy to use free PC/Mac software. The software also allows you to view in-depth analysis of your journeys, including information on dates and times, speed, GPS location, and more. Connect your Dash Cam via USB (see 'PC Connection', page 38) or use an SD card reader (integrated or external). When you connect your Dash Cam, if MyNextbase Player™ is already open it will ask if you would like to import all files directly to your video library.

MyNextbase Player can be downloaded for free from the 'Support and Downloads' page at: www.nextbase.com.



- 1 Add Video**
Add a video to the file list, ready for you to view, edit, and share. Clicking this will open your default file explorer; your Dash Cam/SD Card will appear as an external device. Once located, select the file(s) you wish to import. You can also drag and drop your videos anywhere on the player to add videos.
- 2 Update Dash Cam**
You can update your Dash Cam's firmware through MyNextbase Player; please note that an internet connection is required to access the latest firmware version. For more information, see page 39 (Firmware Updates).
- 3 Snapshot**
During video playback, pressing 'Snapshot' will Pause the video. You can move one frame at a time using the video controls beneath the playback timeline or the left/right arrow keys. Clicking 'Save Image' in the dialogue box will save the image as a PNG in a destination of your choice.

- 4 Edit Video**
Within the video editing process you can join multiple videos together, trim the clips, add annotations and titles screen, and alter output settings. See the next page (page 34) for more details.
- 5 Share Video**
Allows you to easily share your Dash Cam videos with insurance companies and social media. See page 35 for details on MyNextbase Cloud™.
- 6 Settings**
Opens the settings tab for MyNextbase Player. Options available include: language, speed units, software update options, map provider (Google Maps™ or Open Street Maps), connection tips, error reports, and Nextbase™ special offers.
- 7 Help**
Opens the Help menu for MyNextbase Player. Options available include: how to use, check for updates, Nextbase website, help & support, send diagnostics, register your Dash Cam, contact us, and about.
- 8 Playback Window**
Displays Dash Cam videos playing in MyNextbase Player.
- 9 Map**
Displays your journey if the video playing has GPS data.
- 10 Zoom**
Use to zoom in/out of the playback window. You can also use the scroll wheel on your mouse.
- 11 Speed Display**
Shows the speed data for the currently playing video. Includes distance travelled, average and max speeds.
- 12 GPS Display**
Shows the GPS data for the currently playing video. Includes co-ordinates and compass direction.
- 13 Video Timeline**
Shows your playback position. Position the slider to move to a specific point in the video.
- 14 Video Playback Controls**
Use to control playback of your videos. Includes colour adjustment, next/previous video, next/previous frame, stop, play, pause, fullscreen.
- 15 G Sensor Timeline and Display**
Shows the live G Sensor data for the currently playing video.
- 16 Volume Controls**
Control the volume of the audio on the currently playing video.
- 17 File Management Bar**
Add, remove, save, and filter videos in your file list.
- 18 File List**
Displays your video library, ready for playback and editing. This list can be filtered in a number of ways, including by name, date, resolution, or whether the file is protected.

MyNextbase Player - Editing Videos

To use MyNextbase Player™ to edit your recorded files, you need to ensure that the file you wish to edit is currently playing in the Playback Window. You can do this by double clicking the file as it appears in the File List window. When the file is playing, click on the 'Edit' button to begin the 6 step editing process.

1. Join Videos (Optional)

The first step allows you to join multiple videos together. Please note that the videos you join together must all be the same resolution. Your video will appear in the centre of the screen, with buttons on either side to add additional videos before or after the chosen video file. Clicking either of these buttons will open up the list of files in your library that can be added. Once added, these will appear next to your original video file.

The order of the video files can be altered by clicking and dragging a video. To remove a video, hover over the chosen file and a 'Remove Video' option will appear. Click to remove this video.

Once you are happy with the video(s) selected, click on the continue button to move to step 2.

2. Trim Video

Trimming the video allows you to shorten your selected clip to only include the incident or event that you are interested in. To the left of the Playback Timeline is a green marker, indicating the beginning of your video. To the right of the Playback Timeline is a red marker, indicating the end of your video. These can be dragged to a point on the Timeline of your choosing; when exporting, MyNextbase Player will create a single video file from the footage located between the markers. The white marker indicates your current playback position.

3. Annotate Video (Optional)

During the video there may be an object or incident that you wish to highlight, annotating your video will allow you to do this. When you annotate a frame, your video will pause at the specified frame and display any annotations that you have added. The video will resume after 4 seconds.

To begin adding annotations, find the frame you wish to annotate (using the white marker, and left/right arrows to scroll through frames), and click on the 'Add Annotation' button to open the annotation screen. Along the top of the annotation screen you will see the annotation tools; Draw, Circle, Square, Rectangle, and Text. Clicking any of these options will add an editable annotation to that frame. This shape/text can be moved, resized, and rotated using the handles on the sides and corners of the selected annotation.

When you have finished your annotation, click 'Save and Close' to return to the Add Annotation screen, where more annotations can be added. When you have finished adding annotations, press 'Continue' to proceed.

4. Add Title Screen (Optional)

Add a title screen to your video. The title will be displayed for 4 seconds at the start of your video. To add a title, click inside the white rectangle and type the desired title. Press 'Continue' to proceed.

5. Output Settings (Optional)

The final step in the editing process allows you to specify the quality of your video file and the data included.

The Video Resolution determines the quality of the video footage; by default the Video Resolution will be set to output at the same quality as the original files. Lowering the Video Resolution will produce lower resolution files but will also reduce the size of the file and lower the time it takes to produce the file. Stamps for GPS, number plate, and time can also be removed, as well as the audio and GPS data from the video by ticking the corresponding box. Once the data has been removed it cannot be added back into the edited video. This will not affect the original file.

Lastly, you can specify the name of the file being created and the location that you would like it saved. When you have chosen your output settings click on the 'Confirm' button and MyNextbase Player will begin processing your video.

6. Process Video

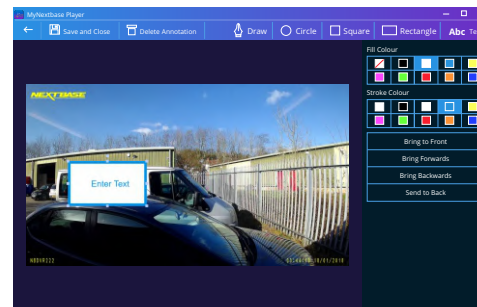
During step 6, MyNextbase Player will process your video clip(s) and edits, and produce a single file in the location specified. This can take some time and will depend on the number and length of video files being joined and video resolution. Once the video has been processed, it will be added to your MyNextbase Player file list.

Video Sharing

Videos can be shared to social media and insurers through the 'Share Video' button. When a destination is selected (i.e Facebook), the target web page will open in your default browser. You will then be asked to sign into your account, and once you are logged in, the browser will close and a pop up will show your upload's progress. When the file is finished uploading you will see an option to view your uploaded file. Videos can also be upload to the Nextbase™ server; you will be e-mailed a secure link to view or download your video. This link can be sent to your insurer, without the need to transfer a large video file. Videos will be automatically deleted 30 days after upload.

More Features

When a video is being played back in the Playback Window, press 'Ctrl + I' to open a window displaying all of the metadata for that video including information such as: file name and size, resolution and frame rate, max and average speeds, GPS information, and more.



Annotation window

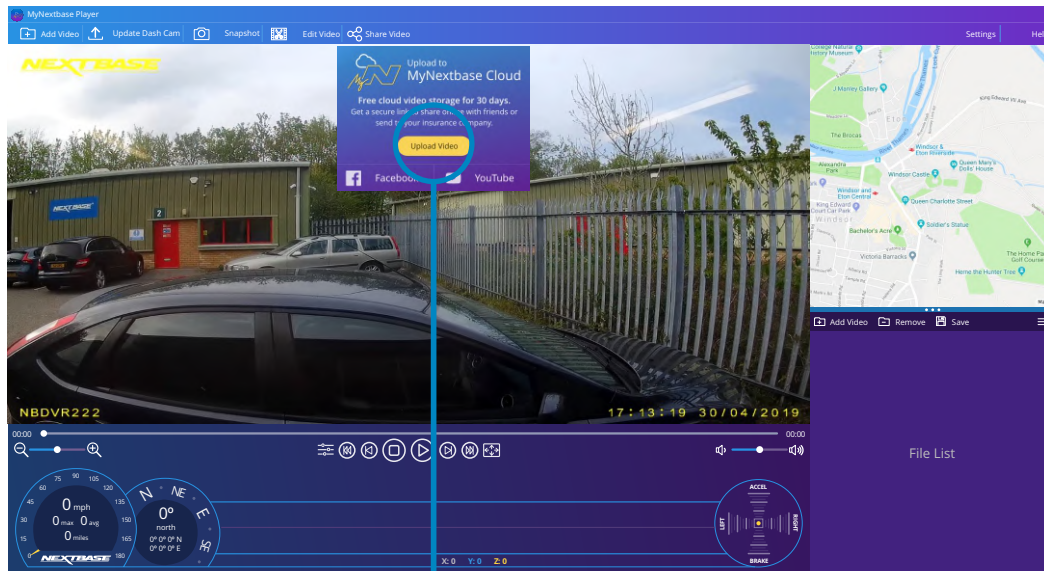
Some functions, such as GPS data, are available only on select models.



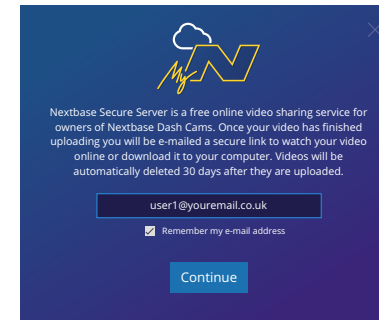
MyNextbase Cloud™



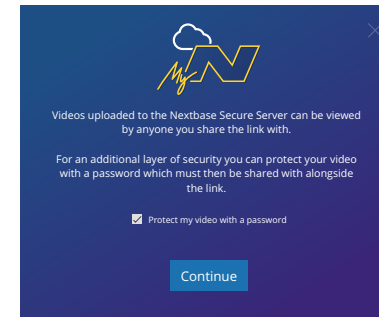
MyNextbase Cloud is our free online video sharing service where you can safely and securely store your Dash Cam files. Upload your file to the Nextbase™ Server using the 'Share Video' function on either MyNextbase Player™, or the MyNextbase Connect™ app. Please note that upload times are dependent on video file size. Once your video has finished uploading you will be given a secure link to watch your video online and/or download it to your computer/device. This link can be shared with others (including your insurer) to view/download the video. Videos will be automatically deleted 30 days after they are uploaded.



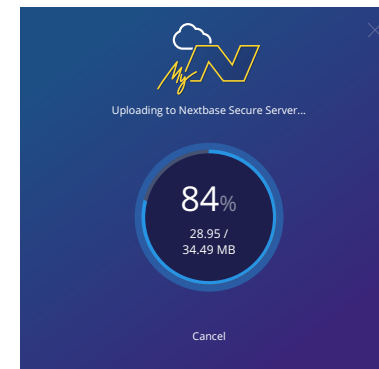
Selecting 'Share Video' will allow you to choose where to upload your video to. Select 'Share with Nextbase' to upload your video to MyNextbase Cloud, and bring up the upload window.



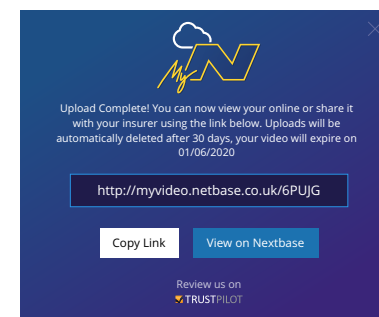
The upload window will guide you through the upload process; next, you will be prompted to enter your e-mail.



You will have the option to protect your videowith a password.



Once the setup of the video has been decided, the upload will begin. Upload times are dependent on file size and internet speed.



When the upload has completed, you will be given a unique web address that will link to your video hosted on the Nextbase server. This link can be shared with others (including your insurer) so that they too can view/download the video. When you first view the video online you may see this message: *"This video was uploaded very recently, it may take up to half an hour to generate the online preview however your video can be downloaded immediately."* This is normal and the preview will become available within half an hour.

Alexa Built-In



Your Dash Cam can be connected to your Alexa account to enable voice control options. You can start and stop recording, ask about traffic on your route, play music, and much more.

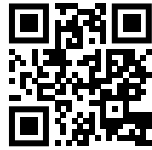
In order for this function to work, you must have both the 'MyNextbase Connect™' and the 'Amazon Alexa' app installed on your smart-phone, have an internet connection, and have Bluetooth turned on.

The Alexa App can be downloaded from the QR Code links below or simply by searching the Apple App Store® or Google Play®.

Google Play Store



Apple App Store



Setup

On the Dash Cam, you will be prompted to download and install the Alexa App from either the Google Play Store (for Android users), or from the Apple App Store (for iPhone users).

From the MyNextbase Connect app, click on the 'Learn More' Amazon Alexa button on the Home page. Click to 'Enable' Alexa, and press 'Open in App' to sign in to Alexa using Amazon login. You must accept all permissions to for Alexa to work.

Once your Dash Cam is successfully paired with the Alexa app on your smart-phone, you can begin using Alexa (see below, for some example phrases to get you started).

Notes:

- Audio from Alexa will come from your smartphone, NOT from your Dash Cam. If your smart-phone is connected to your vehicle's speaker system, either via Bluetooth or via an aux cable, Alexa's audio output will come through your vehicle's speaker system.
- Make sure the volume on your smart-phone is turned up, or you will not be able to hear Alexa's responses.
- When Alexa is being used, a blue bar will be visible along the bottom of your Dash Cam's Live View Screen.

Below are a selection of example phrases to get started:

News and Information

"Alexa, what's in the news?"

"Alexa, how's my commute?"


Entertainment

"Alexa, play my driving playlist."

"Alexa, resume audiobook."

"Alexa, what's the traffic like?"



Alexa is not available in all languages; check the MyNextbase Connect app for the list of supported languages 



The 622GW Dash Cam comes with what3words enabled, allowing you to share precise locations easily.

what3words has divided the globe into 3m squares and given each one a unique 3 word address. It means everywhere can be located with just three words.

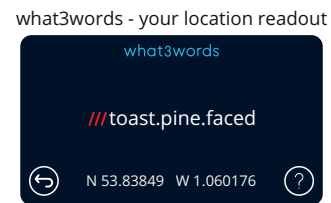
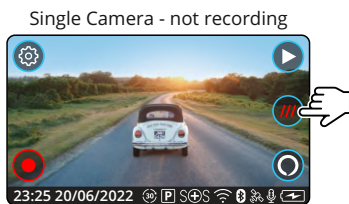
In the event of a serious driving incident where you are incapacitated, the Emergency SOS feature (pages 24-26) automatically sends your GPS location to the Emergency Services so they can be dispatched to assist you.

However, should you be involved in an incident but are *not* in need of an ambulance, the Emergency SOS should be cancelled. In this case, you will see the below screen, which will display your current what3words location, which can then be passed on to a vehicle recovery service, taxi, or friend.



When the Dash Cam is in Video Mode, (either recording or not recording), and your vehicle is parked and at a standstill, press the what3words button to the right of the Dash Cam screen to display your current unique what3words location.

You can press the question mark icon (?) on the what3words screen for further information about what3words, as well as a link to their website, www.what3words.com.



Note: Always gather as much location information as you can in an emergency in case 3 word addresses aren't accepted.




PC Connection

PC Connection

Access Files

Power On

Firmware Update

Use the supplied USB cable to connect the Dash Cam directly to your PC via the  socket; do NOT connect the USB cable to the Powered Mount.

Once connected the Dash Cam will turn on with three options available; 'Access Files', 'Power On', and 'Update Firmware', as described below. Firmware Update information can be found on the next page.

Access Files (Windows)

When this option is selected, the Dash Cam will function as a card reader for your PC. An extra drive will appear, and you will be able to view / manage the stored files upon the MicroSD card within the Dash Cam. You will be able to view your files using MyNextbase Player™, a free editing and sharing software available to download from www.nextbase.com. The Dash Cam is a 'read-only' device, therefore uploading files to the SD card when in Access Files mode is not possible.

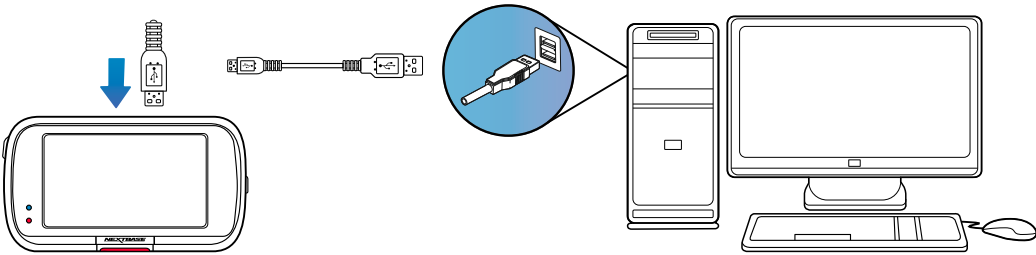
Access Files (Mac)


When this option is selected, the Dash Cam will function as a card reader for your MAC. The 'Nextbase' external USB disk icon will appear on your MAC and you will be able to view and/or manage stored files. You will be able to view your files using MyNextbase Player, a free editing and sharing software available to download from www.nextbase.com.

The Dash Cam is a 'read-only' device, therefore uploading files to the SD card when in Access Files mode is not possible. When the Dash Cam is connected to either a Windows or Mac system you will see a pop up on the Dash Cam that will read 'Use MyNextbase Player to review, edit, save, and share recordings'.

Power On (Windows & Mac)

When this option is selected, the Dash Cam will power on with all functions available. This includes charging of the internal battery, a full charge will take approximately 2 hours.



 ALWAYS turn OFF the Dash Cam before disconnecting from your PC/Mac.



Firmware Update Information

Firmware Update

Use 'MyNextbase Player' to update your Dash Cam Firmware, by selecting "Update Dash Cam".

Firmware controls the basic functioning of the Dash Cam. If your Dash Cam is not functioning correctly, you may need to update your firmware.

Firmware updates may also be released to fix bugs, and improve the general functionality of the Dash Cam. In short, it's important to keep the firmware on your Dash Cam up to date so it can operate to its full capacity.

How to Check your Dash Cam's current Firmware Version

Within the Setup Menu, on page 4, select 'System Info'. Here you will find information relating to your Dash Cam, including what firmware version is currently active (i.e R05.3).

Ways to Update Firmware on your Dash Cam

There are a number of ways for you to update your firmware version.

- Connect your Dash Cam's SD Card to PC or Mac™ using a card reader. This will open a file explorer drive, and show the contents of your SD Card. Go to the 'Support & Downloads' page on nextbase.com and download the newest firmware version (i.e R05.4); this will download as a .bin file. Drag and drop the .bin file to the SD Card. Eject the SD Card and insert it back into your Dash Cam. When power is supplied to your Dash Cam it will turn on, and will automatically begin updating. While updating, the red LED to the left of the screen will start flashing. Once the update has been completed your Dash Cam will automatically restart.
- If you have a PC, You can also update your Dash Cam using the 'Update Dash Cam' function on MyNextbase Player™. This function will NOT work on a Mac. Connect your Dash Cam to PC via USB, select 'Firmware Update' and open up MyNextbase Player™ (available to download for free from nextbase.com). Select 'Update Dash Cam'. A pop-up will appear on your PC describing your current firmware, and the latest version available. When you select 'Update', your Dash Cam will automatically begin updating. While the Dash Cam is updating, the red LED will flash. Once the update has been completed your Dash Cam will automatically restart. Please note that an internet connection is required for the Dash Cam to be updated.

Notes: If 'Keep User Settings' is turned ON in the Setup Menu, your Dash Cam will boot up normally, straight into video live view mode, ready to use. If 'Keep User Settings' is turned OFF, after the update is complete, the Dash Cam will boot up into the First Time Use menu, which must be completed before the Dash Cam can be used. Files saved on the SD card will not be affected by the firmware update.



TV Connection

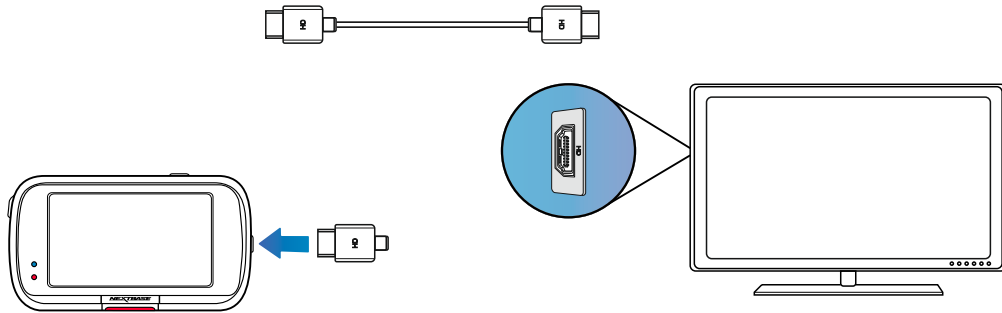
The Dash Cam can be connected to external video equipment such as a television or monitor to allow you to view your videos on a larger screen. You can connect your Dash Cam to any television or monitor using an HD-Out cable. Please note that not all televisions/monitors will be compatible with your Dash Cam.

Connect the HD-Out cable (available from your nearest retailer) between the Dash Cam and your external device (see diagram below), then turn on the Dash Cam. The screen on the Dash Cam will be blank as the video image is now being sent to the external device, the red power LED on the Dash Cam will be lit indicating the unit is turned on. You can then proceed to use the Dash Cam as you would normally.

Make sure that the Dash Cam battery is charged prior to use, as power is not supplied to the Dash Cam via the HD-Out cable.

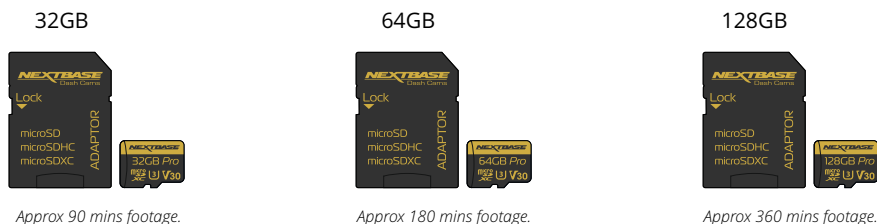
For prolonged use, an external power supply may be required; use the supplied USB cable with a 5Vdc/USB adaptor, of the type typically supplied with mobile phones.

Note: ENSURE that any external power sources are of the correct 5Vdc output, otherwise damage will be caused that is not covered under the manufacturer's warranty.

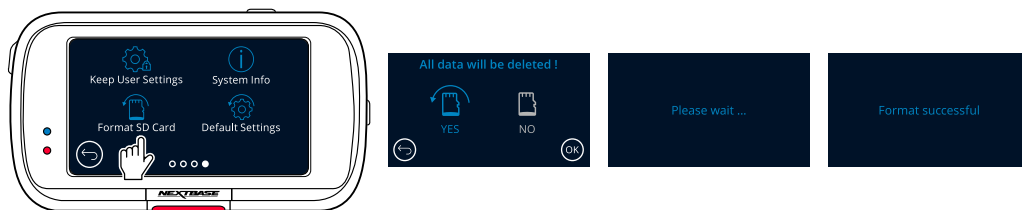


Nextbase™ SD Cards

For best results, we recommend using our Nextbase branded SD cards with your Dash Cam, available to purchase online from nextbase.com, or your nearest retailer.



We recommend formatting your SD Card every 2 weeks to ensure that there is enough space to record and store new footage. When formatting, protected files WILL be deleted. If you wish to keep these protected files, you must back them up externally, most commonly by saving files to a desktop computer, or another secure storage point. To clear your SD card, go to the 'Format SD Card' function in your Dash Cam's Setup settings Menu and follow the instructions on screen.



Which SD Card should I use in a Dash Cam ?

Nextbase have designed an SD card specifically to fulfill the needs of our Dash Cams. We work directly with the factory to ensure consistency of the SD card quality. Nextbase have spent years testing, trialling, and developing SD cards to optimise their performance with our Dash Cams.

Due to the differences in technology an SD card that works with a mobile phone or computer won't necessarily work well with a Dash Cam. The main differences and selling points between all SD cards are the storage size (16GB, 32GB, 64GB, etc.) and the READ speed. READ speed isn't too important when it comes to Dash Cams, as a Dash Cam WRITES data to the SD card when recording. The ability to maintain a high WRITE speed consistently is what Nextbase SD cards are designed to do better than any other SD card. Any drop/fluctuation in WRITE speed within the SD card causes the Dash Cam footage to buffer, and in some cases will stop the recording entirely. Years of research and design allows our SD card controller and Firmware on the SD card to achieve the requirements of our Dash Cams, where other SD cards cannot.

A large requirement our Dash Cams place on the SD card is the ability to re-WRITE over the oldest footage when the SD memory becomes full. This means the Dash Cam is always Loop Recording - when the Dash Cam is on it is always recording. From our experience most non-Nextbase SD cards struggle to do this as effectively as our SD cards, this has caused footage to be missing and footage to fail to record in the first place.

SD Card Q&A

Q) "Why should I buy a Nextbase branded SD card? Can't I just use any card?"

A) Our cameras have different requirements to other recording devices; this is because they need to keep recording when the SD card is full whilst overwriting the oldest unprotected files at the same time.

Q) "Why are Nextbase SD cards more expensive than other brands SD cards?"

A) Years of research and development have led to the creation of an SD card that has superior capabilities to ensure it works with a Dash Cam, where other SD cards don't have such capabilities. Dash Cams have greater technological requirements from an SD card than a mobile phone or computer, for example, thus the larger price tag.

Q) "Do non-Nextbase SD cards work at all?"

A) A card that is not made for this purpose may appear to work perfectly in the beginning, although failure tends to happen after prolonged use, this could be days, weeks, or months. In a worst-case scenario, you may only discover recording failure after your SD card fails to record a serious incident, therefore using a suitable card is imperative.

Q) I have a rear camera module as well as the Dash Cam, which SD card do I need?

A) If you are using a Rear Camera module with your Dash Cam you need to ensure that a U3 SD card is used inside the camera. It is important to note that our 32GB SD card will record approximately 1.5 hours of 4K footage, before the Dash Cam begins overwriting the oldest recordings, or 45 minutes if using a Rear Camera Module. The 62GB SD card will record approximately 3 hours of 4K footage, before the Dash Cam begins overwriting the oldest recordings, or 1.5 hours if using a Rear Camera Module. The 128GB SD card will record approximately 6 hours of 4K footage, before the Dash Cam begins overwriting the oldest recordings, or 3 hours if using a Rear Camera Module.

Q) "What errors may I encounter using a faulty or incompatible SD card?"

A) You may experience any of the following:

- SD error messages
- Recording failure
- Automatic recording failure
- Frozen screen
- Gaps between recordings
- Corrupted or unplayable files
- Failure to startup and shutdown
- Inoperable buttons

If you experience any of the faults listed above, we strongly recommend that you replace your SD card with a Nextbase SD card. All our Dash Cams are tested using Nextbase branded SD cards, therefore we cannot attest to the compatibility of other manufacturer's products. For best results we always recommend using Nextbase branded cards.

Best practice is still to Format the SD card occasionally - for a heavy user this would be every two weeks, for a light user this would be once a month.



Frequently Asked Questions

| Problem | Solution |
|--|--|
| Video Image is blurred. | Remove the protective lens cover, clean the lens, make sure the windshield is clean and clear of grease, dirt, and debris. Ensure that the Polarising Filter has been set properly see page 17 for instructions on how to set up the Polarising Filter. |
| I cannot insert the MicroSD card. | MicroSD cards are very small and require delicate use. Align the card with the diagram shown upon the Dash Cam and insert the card until you feel a slight spring resistance. You now need to push the card, using your finger nail until you hear and feel a small click. Release pressure and the card will stay retained within the Dash Cam. If you are having difficulty, use the edge of a small coin. |
| I cannot remove the MicroSD card. | With the card installed, using your fingernail, you now need to push the card further inwards slightly, until you hear and feel a small click. If you are having difficulty, use the edge of a small coin. Release pressure and the MicroSD card will spring out far enough for you to take a hold of it. |
| Video Files cannot be played on my computer. | The video files from the Dash Cam are in .MP4 format and may not be compatible with your PC if suitable playback software is not installed. |
| Video File playback is jumpy. | Remove the SD card and format to remove non-contiguous files. For best recording use a Nextbase branded U3 micro SD card of 8 to 256GB. PC may not be sufficient for the playback task, try a different PC. Copy the recorded video files onto the PC / Mac for playback directly rather than use the Dash Cam as a card reader, as the USB system on your PC may be too slow for HD video playback. |
| The sound is not synchronised with video during playback. | The Codecs upon your PC may not be compatible or the latest standard. Download the latest Codecs from: www.nextbase.com . |
| Video has no sound. | Ensure that 'Audio' setting is turned ON within the Video Menu. |
| Photograph is blurred. | Make sure the Dash Cam is still while taking the photo. The Dash Cam has a minimum focal range of around 2 meters. objects closer than this are likely to become blurred,. |
| I can only record a few minutes of video on my MicroSD card. | Change the recording size (Video Length function) to a smaller size. Increase the size of the MicroSD card. Max 128/256GB. In the Setup Menu, ensure that Recording History is set to Maximum. Minimum limits the total number of recordings on your Dash Cam to 4. |
| Access Files does not work. | The Access Files function will work on both Windows and Mac. Restart the PC, as this may be required for the necessary driver to be loaded correctly. Disconnect and reconnect the Dash Cam. Be aware that you cannot transfer files to the Dash Cam in 'Access Files'. Files can be transferred to the SD Card using an SD Card reader. |
| I cannot save files to the memory card when the Dash Cam is connected to my computer under 'Access Files'. | Correct, the Dash Cam is a 'read-only' device. It is not recommended to save files from other sources to the same memory that you will use for recording within the Dash Cam, as these may have a negative effect on the performance of the Dash Cam. |
| My Dash Cam shuts down by itself after a while. | Either the battery has gone flat, there is no power to the Dash Cam and the Auto Power Off period has been triggered or Parking Mode has been turned on and no vehicle movement has been detected for 5 minutes. |
| No power to my Dash Cam but it works upon my computer. | The cigarette power cable is not working. Inspect the fuse in the Car Power Cable plug. Replacement fuse = 2A 32mm type. If the fuse is found to be blown, inspect the power cable for damage which may have caused the fuse to blow. |
| I can't delete files on my SD card within the Dash Cam. | Check to see if these files are 'protected'. If so please follow instructions to 'un-protect'. |



Frequently Asked Questions (page 2)

| Problem | Solution |
|--|---|
| The screen blanks after a few minutes upon my Dash Cam. | The screen saver is set to ON. Change settings to OFF if required. Default setting is OFF. |
| I get the message: "Cluster size wrong. Please format SD card" on screen. | The SD card has been formatted in another device and the Cluster size is not compatible. Use the Setup Menu to format the SD card from within the SD card. |
| The battery will not charge. | Ensure the Dash Cam is connected to a reliable power source and that the supplied Car Power Cable is being used, with the blue LED lit. The battery will only receive charge when the Dash Cam is connected to a power source. |
| The battery only lasts 30 seconds. | Charging takes approximately 2 hours and a full charge is indicated when the blue LED on the Dash Cam goes out. To charge, take the camera indoors and charge it for 2 hours; once fully charged, check to see if the problem persists. If it persists, the car power supply may be causing the issue. |
| The battery only lasts 10 - 15 minutes. | This is normal, the battery design allows the 'Auto Power Off' feature to function in event of power loss within the vehicle. It is not intended as an alternative power source to replace the supplied car adaptor. |
| I get the message "SD Card Error" on screen. | The SD card has become unusable by the Dash Cam. Back up useful files to your PC and then Format your SD card from within the Dash Cam setup menu. |
| I get the message "Card Full" on screen. | The SD card has become full as there are too many protected files which cannot be deleted to allow for further recording to take place. Transfer useful files to your PC and delete unnecessary files, or Format the SD card from within the Dash Cam setup menu. |
| When connected to a TV/monitor via HDMI cable, there is no image on the TV/monitor. | The Dash Cam is not compatible with all TVs and monitors. Ensure that all connections are correctly attached. |
| I have turned on 'Parking Mode' and now can't stop the recording. | The Dash Cam will start a recording whenever motion is detected. To turn off Parking Mode firstly shutdown the Dash Cam and remove the SD card, this will avoid recording being activated accidentally. Switch the Dash Cam On and within the Setup Menu, turn off the 'Parking Mode'. |
| When I press the Menu button nothing happens. | This is normal during recording. Stop the recording before pressing the MENU button. If recording re-starts before you can press MENU, then see the Parking Mode section above. |
| Downloading files from www.nextbase.com using Google Chrome results in a Malicious Software message. | This is not a cause for concern, as this message will appear whenever new software is downloaded from the internet. Simply go to the settings within Google Chrome and turn off the malicious software protection temporarily to download and install the playback software. Reinstate previous Google Chrome settings afterwards. |
| There's no PC Connection Screen when connected to my computer. | Try multiple USB ports and an alternative mini USB cable (if possible). Please ensure it is inserted into the USB port on the Dash Cam and not into the mount. |
| My Camera feels warm when it is operating. | It is normal for the camera to feel warm during typical use, especially when it's recording high definition video or communicating via Wi-Fi. |
| Alexa is not working on my Dash Cam. | Ensure that you have both the Alexa App and the MyNextbase Connect app installed. We recommend signing into Alexa through the MyNextbase Connect home screen to ensure that the apps are successfully paired. Ensure that the volume is turned up on your paired smartphone. |
| The QR codes are not working. | There is some variability in the effectiveness of QR Code scanning apps. If yours is not working, try a different one. If the problem persists, you can visit the Google Play Store/Apple App Store and search for MyNextbase Connect or Amazon Alexa manually. |
| Unresolved Issues. | Reset the Dash Cam to the default settings within the Setup Menu and try again. Should the problem persist call the UK helpline (02920) 866429 or call your local support centre, found at www.nextbase.com Alternatively email: support@nextbase.com |



CE Mark Information (Conformité Européenne)

The CE (Conformité Européenne) mark is a symbol (below) printed on products to indicate its conformity with health, safety, and environmental protection standards for products sold within Europe. It is used on many products across many industries (for example, SD cards) as a mark of compliance with European standards.



In recent years, many variations of this mark have appeared in the market. While similar, the mark above is the *only* variant that is associated with, and declares compliance with European standards. Other marks, like the ones below, do not guarantee that the product it is attached to or is compliant with European standards for sale in the European Economic Area (EEA).



The main difference between a legitimate CE mark and a misused CE mark is the spacing of the letters. The letters, C and E, tend to be formed identically, however the spacing between them is what separates the real from the false. The images below show how the letters should be spaced. There will never be additional markings such as a border or circle used on a legitimate CE Mark.



CE Mark



False CE Mark
(too close)



False CE Mark
(too far)

As products without the correct CE marking are not guaranteed to comply with European Health and Safety standards, those products are potentially less reliable and could pose a safety risk. Be aware of the CE marking when purchasing electrical products. The descriptions above of false CE markings are not comprehensive; be aware that new variations may appear on the market.

Software License Agreement

By using the device, you agree to be bound by the terms and conditions of the following software license agreement.

Nextbase™ grants to you for the period for which you possess the relevant device a non-exclusive, non-transferrable (save in circumstances where you sell or transfer the relevant device to another person – please see below for more details) a limited license to use the software embedded in this device (the “Software”) in binary executable form in the normal operation of the product together with any documentation and material (whether printed or on-line) made available by Nextbase in respect of the Software (the “Documentation”). Title, ownership rights, and intellectual property rights in and to the Software and the Documentation remain in Nextbase and/or its third-party providers.

You acknowledge that the Software and the documentation is the property of Nextbase and/or its third-party providers and is protected throughout the world by intellectual property rights laws and treaties, including the United States of America and international copyright treaties.

You further acknowledge that the structure, organization, and code of the Software, for which source code is not provided, are valuable trade secrets of Nextbase and/or its third-party providers and that the Software in source code form remains a valuable trade secret of Nextbase and/or its third-party providers. You agree not to decompile, disassemble, modify, reverse assemble, reverse engineer, or reduce to human readable form the Software or any part thereof or create any derivative works based on the Software or the Documentation.

You agree not to copy, rent, lease, sub-license, loan, translate, merge, adapt, vary, alter or modify, the whole or any part of the Software or Documentation nor permit the Software or any part of it to be combined with, or become incorporated in, any other programs.

You agree not to export or re-export the Software or Documentation to any country in violation of the export control laws of the United States of America or the export control laws of any other applicable country.

If you use MyNextbase Connect™ or MyNextbase Player™, you must comply with the applicable terms of use and acceptable use policies, which can be found at www.nextbase.com.

Online Auction Purchases of Non-New Goods

Products purchased through online auctions are not eligible for Nextbase warranty coverage. Online auction confirmations are not accepted for warranty verification. To obtain warranty service, an original or copy of the sales receipt from the original retailer is required. Nextbase will not replace missing components from any package purchased through an online auction.

International Purchases

A separate warranty may be provided by international distributors for devices purchased outside the United Kingdom depending on the country. If applicable, this warranty is provided by the local in-country distributor and this distributor provides local service for your device. Distributor warranties are only valid in the area of intended distribution.

Warranty

This limited warranty gives you specific legal rights, and you may have other legal rights, which vary from state to state (or by country or province). Nextbase™ does not exclude, limit or suspend other legal rights you may have under the laws of your state (or country or province). For a full understanding of your rights you should consult the laws of your state, country or province.

Nextbase Liability extends to the cost of the Dash Cam alone. Any recordings which have not taken place or recoverable from the SD card for whatever reason are not covered by the product warranty. No liability for costs incurred due to corrupt, missing, erased video recordings will be accepted. No claims for additional costs outside the cost of the Dash Cam itself will be accepted.

Nextbase products are warranted to be free from defects in materials or workmanship for one year from the date of purchase, with batteries warranted to be free from defects in materials or workmanship for six months from the date of purchase. Within this period, Nextbase will, at its sole option, repair or replace any components that fail in normal use. Such repairs or replacement will be made at no charge to the customer for parts or labour, provided that the customer shall be responsible for any transportation cost. This Limited Warranty does not apply to: (i) cosmetic damage, such as scratches, nicks and dents; (ii) consumable parts, such as batteries, unless product damage has occurred due to a defect in materials or workmanship; (iii) damage caused by accident, abuse, misuse, water, flood, fire, or other acts of nature or external causes; (iv) damage caused by service performed by anyone who is not an authorised service provider of Nextbase; (v) damage to a product that has been modified or altered without the written permission of Nextbase, or (vi) damage to a product that has been connected to power and/or data cables that are not supplied by Nextbase, or (vii) damage to a product that has been connected to 12Vdc directly, having cut off the Cigarette Lighter plug which contains the 12/24Vdc to 5Vdc adaptor. In addition, Nextbase reserves the right to refuse warranty claims against products or services that are obtained and/or used in contravention of the laws of any country.

To the maximum extent permitted by applicable law, the warranties and remedies contained in this limited warranty are exclusive and in lieu of, and Nextbase expressly disclaims, all other warranties and remedies, whether express, implied, statutory, or otherwise, including without limitation any implied warranty of merchantability or fitness for a particular purpose, statutory remedy or otherwise. This limited warranty gives you specific legal rights, and you may have other legal rights, which vary from state to state and from country to country. If implied warranties cannot be disclaimed under the laws of your state or country, then such warranties are limited in duration to the duration of this limited warranty. Some states (and countries and provinces) do not allow limitations on how long an implied warranty lasts, so the above limitation may not apply to you.

In no event shall Nextbase be liable in a claim for breach of warranty for any incidental, special, indirect or consequential damages, whether resulting from the use, misuse or inability to use this product or from defects in the product. Some states (and countries and provinces) do not allow the exclusion of incidental or consequential damages, so the above limitations may not apply to you.

If during the warranty period you submit a claim for warranty service in accordance with this Limited Warranty, then Nextbase will, at its option: (i) repair the device using new parts or previously used parts that satisfy Nextbase's quality standards, (ii) replace the device with a new device or a refurbished device that meets Nextbase's quality standards. Such remedy shall be your sole and exclusive remedy for any breach of warranty. Repaired or replaced devices have a 30 day warranty. If the unit sent in is still under its original warranty, then the new warranty is 30 days or to the end of the original 1 year warranty, whichever is longer.

Before seeking warranty service, please access and review the online help resources available on nextbase.com. If your device is still not functioning properly after making use of these resources, contact a Nextbase Authorised service facility in the original country of purchase or follow the instructions on support at nextbase.com to obtain warranty service.

If you seek warranty service outside of the original country of purchase, Nextbase cannot guarantee that the parts and products needed to repair or replace your product will be available due to differences in product offerings and applicable standards, laws and regulations. In that case, Nextbase may, in its sole discretion and subject to applicable laws, repair or replace your product with comparable Nextbase products and parts, or require you to ship your product to a Nextbase Authorised service facility in the country of original purchase or to a Nextbase Authorised service facility in another country that can service your product, in which case you will be responsible for complying with all applicable import and export laws and regulations and for paying all custom duties, V.A.T., shipping fees and other associated taxes and charges. In some cases, Nextbase and its dealers may be unable to service your product in a country outside of the original country of purchase or return a repaired or replaced product to you in that country due to applicable standards, laws or regulations in that country.

Compliance & Conformity Statements

Product Wireless Information

2.4G Wi-Fi (EIRP Max 13.41dBm), BT(EIRP Max. 6.23dBm), BLE(EIRP Max. 5.56dBm)

ACMA RCM Notice to Users in Australia & New Zealand

Having had regard to documents submitted, our Authorised Agent (Global Approvals ACN/ARBN 25 497 357 455) is satisfied that the in-vehicle accessory product NBDVR622GW complies with the requirements of the relevant ACMA Standards made under the Radiocommunications Act 1992 and the Telecommunications Act 1997.

The full compliance declaration, including the details of the applicable standards and documents submitted can be found on our website at <https://www.nextbase.com/certifications>

CE

Hereby, Portable Multimedia Limited declares that the radio equipment type 622GW Dash Cam is in compliance with Directive 2014/53/EU. The full text of the EU declaration of conformity is available at the following internet address: <https://www.nextbase.com/certifications/>

UKCA

Hereby, Portable Multimedia Limited declares that the radio equipment type 622GW Dash Cam is in compliance with UK Regulation S.I. 2017 No. 1206 . The full text of the UKCA declarations of conformity are available at the following internet address: <https://www.nextbase.com/certifications/>

RF Exposure Information (MPE)

This device meets the EU requirements and the International Commission on Non-Ionising Radiation Protection (ICNIRP) on the limitation of exposure of the general public to electromagnetic fields by way of health protection. To comply with the RF exposure requirements, this equipment must be operated in a minimum of 20 cm separation distance to the user.

FCC Statement

This device complies with Part 15 of the FCC Rules. Operation is subject to the following two conditions:

- (1) this device may not cause harmful interference, and
 - (2) this device must accept any interference received, including interference that may cause undesired operation.
- This equipment has been tested and found to comply with the limits for a Class B digital device, pursuant to Part 15 of the FCC Rules. These limits are designed to provide reasonable protection against harmful interference in a residential installation. This equipment generates, uses and can radiate radio frequency energy and, if not installed and used in accordance with the instructions, may cause harmful interference to radio communications. However, there is no guarantee that interference will not occur in a particular installation. If this equipment does cause harmful interference to radio or television reception, which can be determined by turning the equipment off and on, the user is encouraged to try to correct the interference by one or more of the following measures:
- Reorient or relocate the receiving antenna.
 - Increase the separation between the equipment and receiver.
 - Connect the equipment to an outlet on a circuit different from that to which the receiver is connected.
 - Consult the dealer or an experienced radio/TV technician for help.
 - This appliance and its antenna must not be co-located or operated conjunction with any other antenna or transmitter.
 - A minimum separation distance of 20cm must be maintained between the antenna and the person for this appliance to satisfy the RF exposure requirements.

FCC Caution

This product does not contain any user serviceable parts. Repairs should only be made by an authorised Nextbase™ service centre. Unauthorized repairs or modifications could result in permanent damage to the equipment, and void your warranty and your authority to operate this device under Part 15 regulations.

IC Warning

This device complies with Industry Canada license-exempt RSS standard(s).

Operation is subject to the following two conditions:

- (1) this device may not cause interference, and
- (2) this device must not accept any interference, including interference that may cause undesired operation of the device.

Le présent appareil est conforme aux CNR d'Industrie Canada applicable aux appareils radio exempts de licence. L'exploitation est autorisée aux deux conditions suivantes:

- (1) l'appareil ne doit pas produire de brouillage, et
- (2) l'utilisateur de l'appareil doit accepter tout brouillage radioélectrique subi, même si le brouillage est susceptible d'en compromettre le fonctionnement.

This device has been evaluated to meet general RF exposure requirement. To maintain compliance with RSS-102 - Radio Frequency (RF) Exposre guidelines, this equipment should be installed and operated with a minimum distance of 20cm between the radiator and your body.

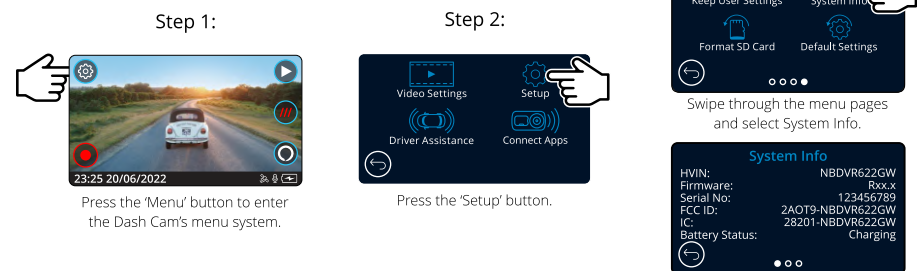
le dispositif de a été évalué à répondre général rf exposition exigence. Pour maintenir la conformité avec les directives d'exposition du RSS-102 - Radio Fréquence (RF). Ce matériel doit être installé et exploité à une distance minimale de 20cm entre le radiateur et votre corps.

IC: 28201-NBDVR622GW

FCC Identifier and ISED Certification Number

The FCC Identifier (FCC ID) is available as an E-label within your Dash Cam's System Info pages. To view the FCC ID please follow the steps below:

FCC Identifier and ISED Certification Number



Note:

- The Regulatory Information (inc. the FCC ID) is embedded with the Dash Cam's firmware, applied to the gift box and included within this User Manual.
- The FCC ID cannot be changed by the user.

The device meets the FCC Radio Frequency Emission Guidelines and is certified with the FCC. Information about this product is on file with the FCC and can be found by inputting the Product's FCC ID (available on the product giftbox and as an e-label accessible as per the information given above) into the FCC ID Search form available at <https://www.fcc.gov/oet/ea/fccid>

The party responsible for FCC compliance is:

Portable Multimedia Limited, 230 Blackfriars Road, London, England, SE1 8NW

To contact Nextbase about the device's FCC equipment authorization, please write us at the address shown above or contact us using the following address: compliance@nextbase.co.uk.

Note: 5G frequency band 5150-5250MHz indoor use only - LE-LAN devices are restricted to indoor operation only in the band 5150-5250 Mhz.



Declaration Number UK20211014-622-001

The manufacturer Portable Multimedia Limited trading as Nextbase

Portable Multimedia Limited, Dorna House Two, 52 Guildford Road,
West End, Surrey, GU24 9PW, United Kingdom

Declares under sole responsibility that the product:

Product Name: 622GW Dash Cam
Model Number: NBDVR622GW, FENBDVR622GW, NBDVR622GW-WHT, FE-NBDVR622GW-WHT,
VYDVR622GW, FE-VYDVR622GW, NBDVR623GW, FE-NBDVR623GW,
NBDVR624GW, FE-NBDVR624GW, NBDVR622GWL, FE-NBDVR622GWL

Is in conformity with the relevant Union Regulations:

The following relevant harmonised standards have been applied:

S.I. 2017 No. 1206 (Radio)

EN 301 489-1, 3, 17, 19
EN 300 328 V2.2.2
EN 303 413 V1.1.1
EN 301 893 V2.1.1

S.I. 2016 No. 1091 (EMC)

EN 55032:2015
EN 55035:2017

S.I. 2016 No. 1101 (Safety)

EN 62368-1:2014
EN 62311:2020
EN 50665:2017

S.I. 2012 No. 3032 (RoHS)

IEC 62321-3, -4, -5, -6, -7, -8

S.I. 2013 No. 3032 (WEEE)

S.I. 2020 no. 1577(REACH)

The conformity assessment procedure as referenced in Part 2 of The Radio Equipment Regulations 2017 has been applied for assessment against Articles; 6.1a, 6.1b and 6.2.

This product complies with the requirements above and carries the UKCA mark accordingly.

The ESA fulfils the requirements of UNECE R10, in particular the limits defined in paragraphs 6.5, 6.6, 6.7, 6.8, 6.9.

Mr. Keelan O'Connor

Quality & Compliance Manager

Portable Multimedia Limited,

Caerphilly, Wales,

14th October 2021



Declaration Number 20210416-622-003

The manufacturer Portable Multimedia Limited trading as Nextbase

Portable Multimedia Limited, Dorna House Two, 52 Guildford Road,
West End, Surrey, GU24 9PW, United Kingdom

Declares under sole responsibility that the product:

Product Name: 622GW Dash Cam
Model Number: NBDVR622GW, FENBDVR622GW, NBDVR622GW-WHT, FE-NBDVR622GW-WHT,
VYDVR622GW, FE-VYDVR622GW, NBDVR623GW, FE-NBDVR623GW,
NBDVR624GW, FE-NBDVR624GW, NBDVR622GWL, FE-NBDVR622GWL

Is in conformity with the relevant Union Regulations:

The following relevant harmonised standards have been applied:

2014/53/EU (RED)

EN 301 489-1, 3, 17, 19
EN 300 328 V2.2.2
EN 303 413 V1.1.1
EN 301 893 V2.1.1

2014/30/EU (EMC)

EN 55032:2015
EN 55035:2017

2014/35/EU (LVD)

EN 62368-1:2014
EN 62311:2020
EN 50665:2017

2011/65/EU + 2015/863 (RoHS Directive)

IEC 62321-3, -4, -5, -6, -7, -8

2012/19/EU (WEEE Directive)

EC 1907/2006 (REACH)

The conformity assessment procedure as referenced in Article 17 and detailed in Annex II of the Radio Equipment Directive has been applied for assessment against Articles; 3.1a, 3.1b and 3.2. This product complies with the requirements above and carries the CE mark accordingly.

The ESA fulfils the requirements of UNECE R10, in particular the limits defined in paragraphs 6.5, 6.6, 6.7, 6.8, 6.9.

Mr. Keelan O'Connor

Quality & Compliance Manager

Portable Multimedia Limited,

Caerphilly, Wales,

14th October 2021

Dash Cams

Eyes on the Road

Nextbase offers a wide range of Dash Cams to best suit your driving needs.



Rear View Cameras

Ready for the Drive

The new Rear Facing Camera, Cabin View Camera, and Rear Window Camera offer views of the road behind as well as ahead, protecting you from all angles.



Accessories


Ready for the Drive

Everything you might need for video storage, Dash Cam protection, and more.




For more details on our full range of Dash Cams and Accessories, download the Nextbase Accessories Manual, available from www.nextbase.com

Nextbase Services and Software




MyNextbase Cloud™

Access your footage anywhere in the world using the free online web portal (internet connection required).



MyNextbase Player™

View, edit, and share your footage on your computer with the new easy to use free PC/Mac software.



MyNextbase Connect™

The new Nextbase App to transfer, view, and edit footage on your smart-phone or tablet.

Dash Cam Services Compatibility

| | MyNextbase Cloud | MyNextbase Player | MyNextbase Connect |
|--------|------------------|-------------------|--------------------|
| 122 | Yes | No | No |
| 222 | Yes | Yes | No |
| 322 GW | Yes | Yes | Yes |
| 422 GW | Yes | Yes | Yes |
| 522 GW | Yes | Yes | Yes |
| 622 GW | Yes | Yes | Yes |



| | 122 | 222 | 322GW | 422GW | 522GW | 622GW |
|--|---------------|-----------------|--------------------------------|--|--|--|
|  Main Resolution | 720P @ 30 FPS | 1080P @ 30 FPS | 1080P @ 60 FPS | 1440P @ 30 FPS | 1440P @ 30 FPS | 4K @ 30 FPS |
|  Screen | 2" LED HD IPS | 2.5" LED HD IPS | 2.5" LED HD IPS Touch | 2.5" LED HD IPS Touch | 3" LED HD IPS Touch | 3" LED HD IPS Touch |
|  Viewing Angle | 120° | 140° | 140° | 140° | 140° | 140° |
|  GPS | No | No | 10x GPS | 10x GPS | 10x GPS | 10x GPS |
|  Wi-Fi | No | No | QuickLink Wi-Fi | QuickLink Wi-Fi | QuickLink Wi-Fi | QuickLink Wi-Fi |
|  Bluetooth | No | No | 4.2 | 4.2 | 4.2 | 5.0 |
|  Polarising Filter | Compatible | Compatible | Compatible | Compatible | Yes | Yes |
|  Alexa Built-in | No | No | No | Alexa Built-in | Alexa Built-in | Alexa Built-in |
|  Parking Mode | Intelligent | Intelligent | Intelligent | Intelligent | Intelligent | Intelligent |
|  Nextbase Emergency Response | No | No | Yes | Yes | Yes | Yes |
|  Nextbase Module Cam Compatible (Cabin View, Rear Facing, Night Vision) | No | No | Yes - Front 1080p Rear 720p | Yes - Front 1440p/1080p Rear 720p/1080p | Yes - Front 1440p/1080p Rear 720p/1080p | Yes - Front 4K/1440p/1080p Rear - 1080p |
|  Nextbase Cloud™ Storage | Yes | Yes | Yes | Yes | Yes | Yes |
|  MyNextbase Player™ | No | Yes | Yes | Yes | Yes | Yes |
|  MyNextbase Connect™ | No | No | Yes | Yes | Yes | Yes |



www.nextbase.com

